



# Global Lighting Technologies Inc.

茂林光電科技(開曼)股份有限公司

**1<sup>st</sup> Tier Light Guide  
Application Company**

(4935. TW)



2020.3.24

## 豁免聲明

本簡報及同時發佈之相關訊息內含有從公司內部與外部來源所取得的預測性資訊。本公司未來實際所發生的營運結果、財務狀況以及業務展望，可能與這些預測性資訊所明示或暗示的預估有所差異，其原因可能來自於各種本公司所不能掌控的風險。本簡報中對未來的展望，反應本公司截至目前為止對於未來的看法。對於這些看法，未來若有任何變更或調整時，本公司並不負責隨時提醒或更新。

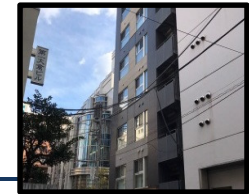


- 公司簡介
- 組織概述
- 財務概況
- 競爭優勢
- 未來展望





- **設立日期: 2000.07.28**
- **IPO 日期: 2011.07.28**
- **公司代號: 4935**
- **資本額: 1,309,370,910 NTD**
- **主要產品: 導光板製造**



**Tokyo, Japan**



**Cleveland, Ohio**



**Su-zhou, China**



**Shang-hai, China**



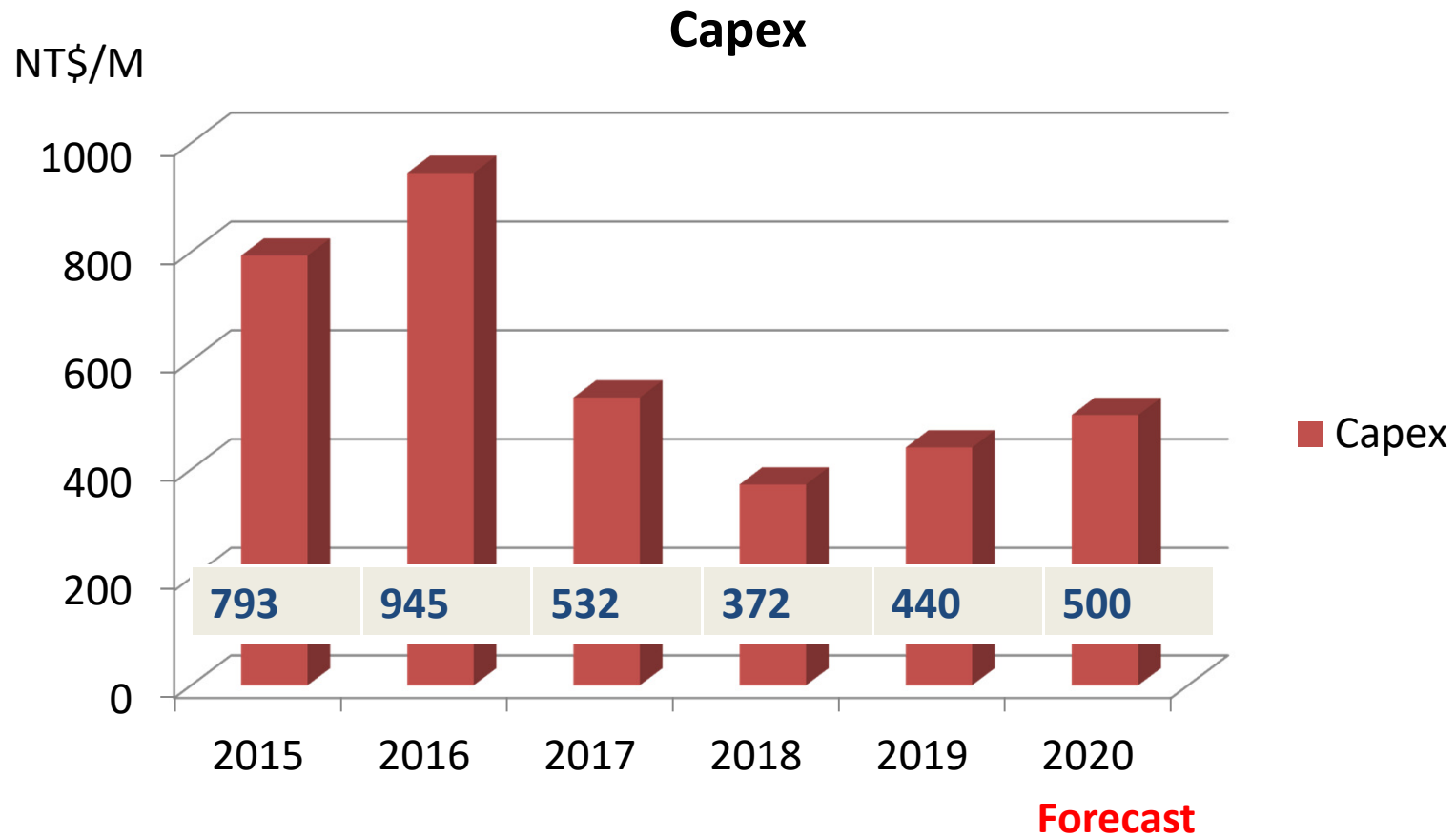
**Zhong-shan, China**

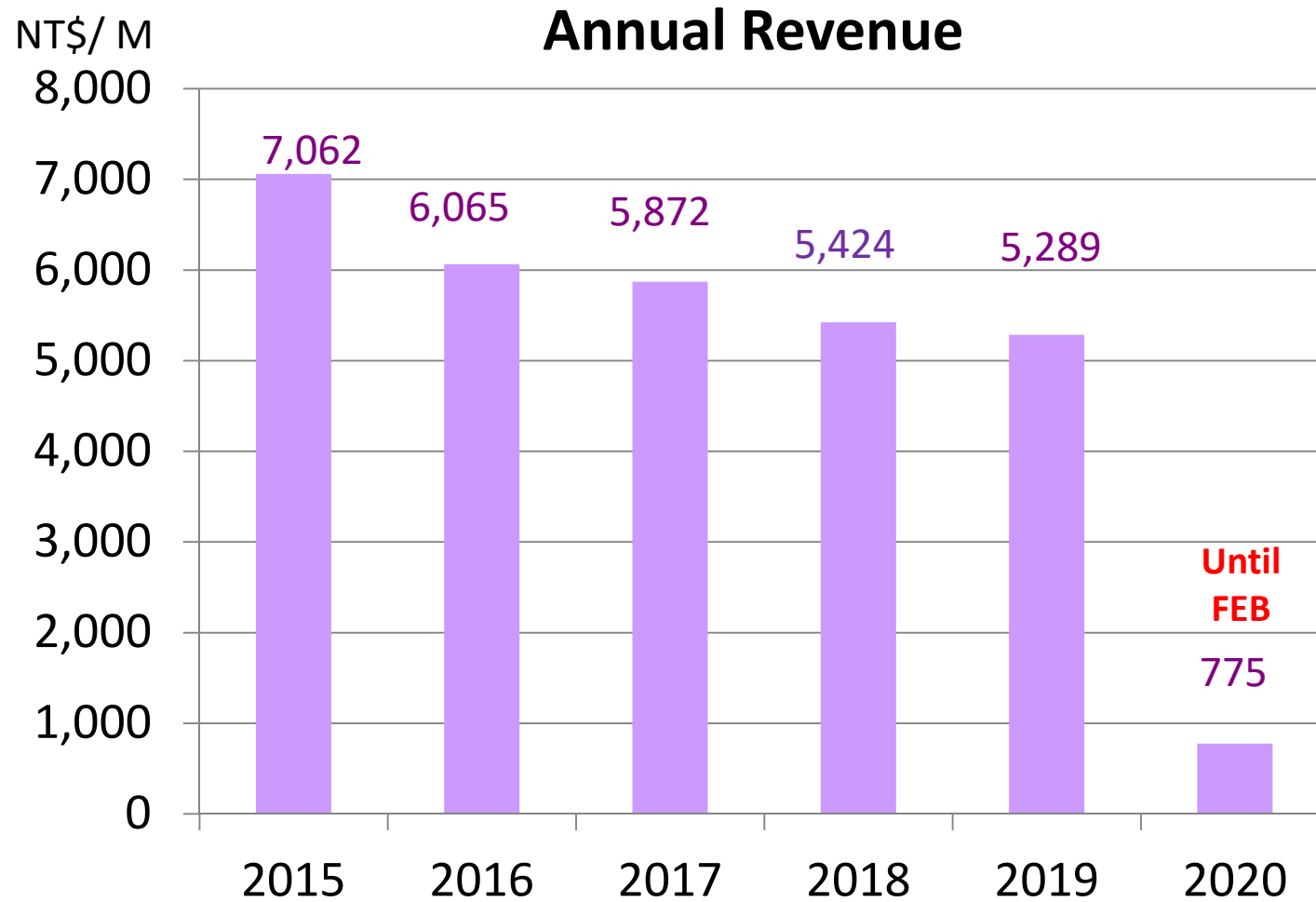


**Tong-uo, Taiwan**



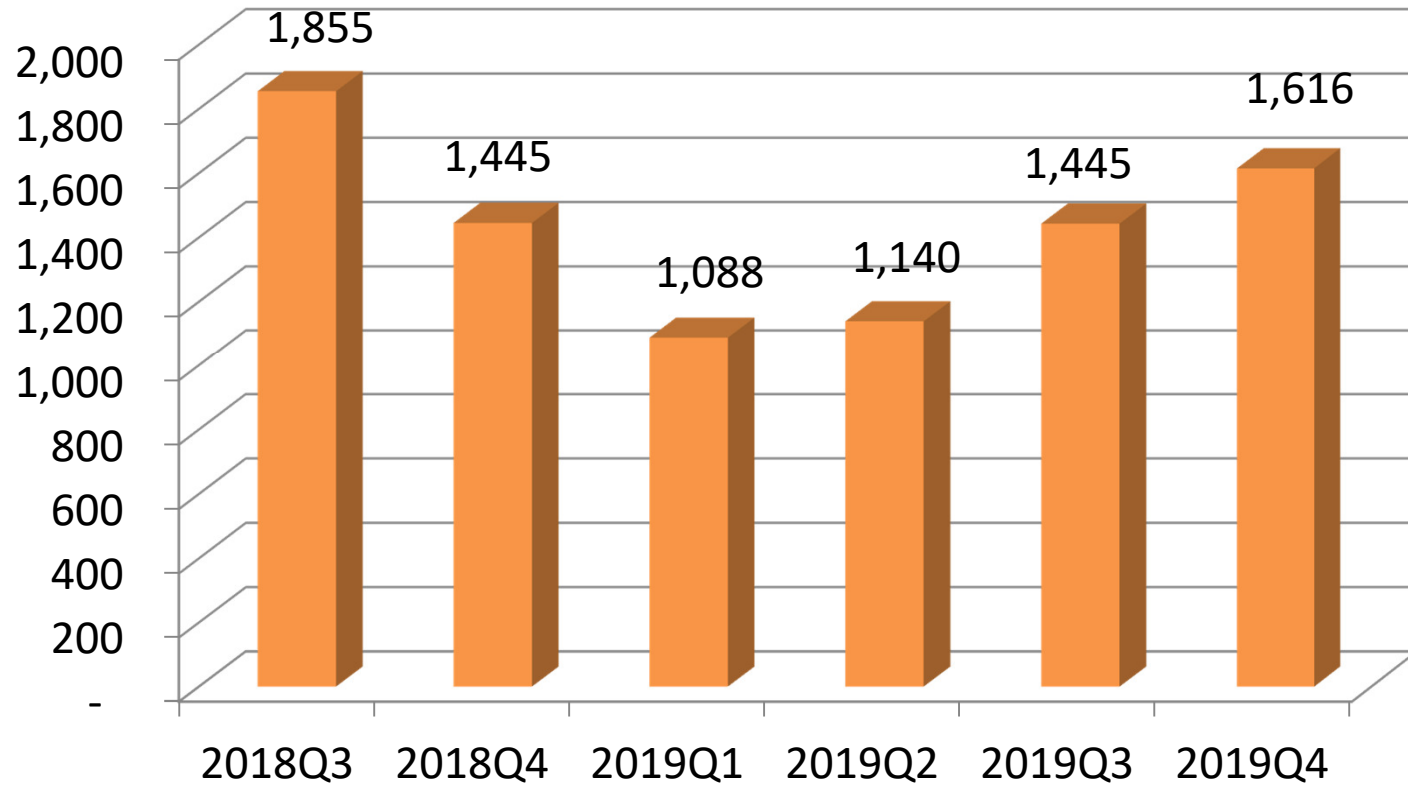
**Zhong-Li, Taiwan**







NT\$/M

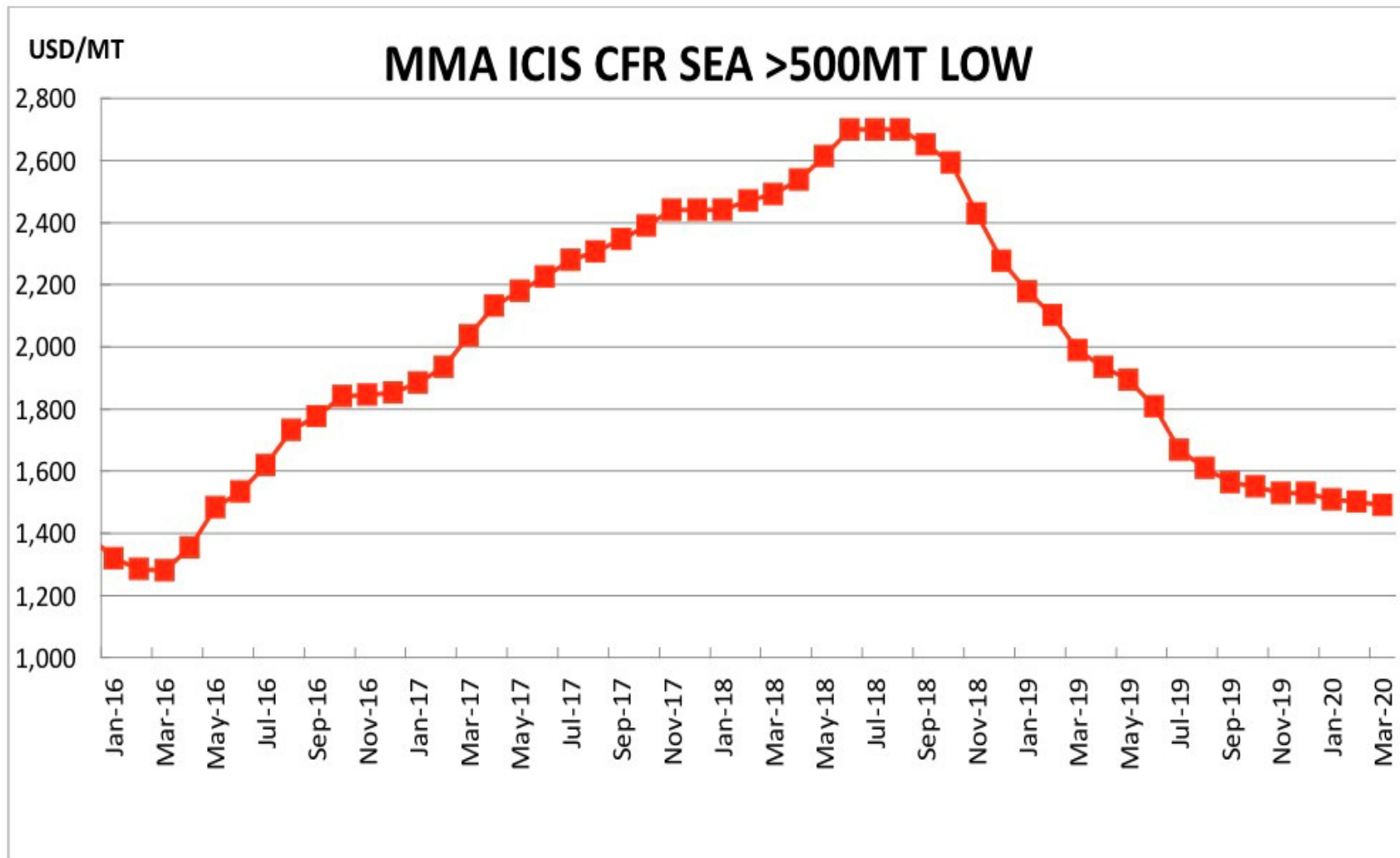


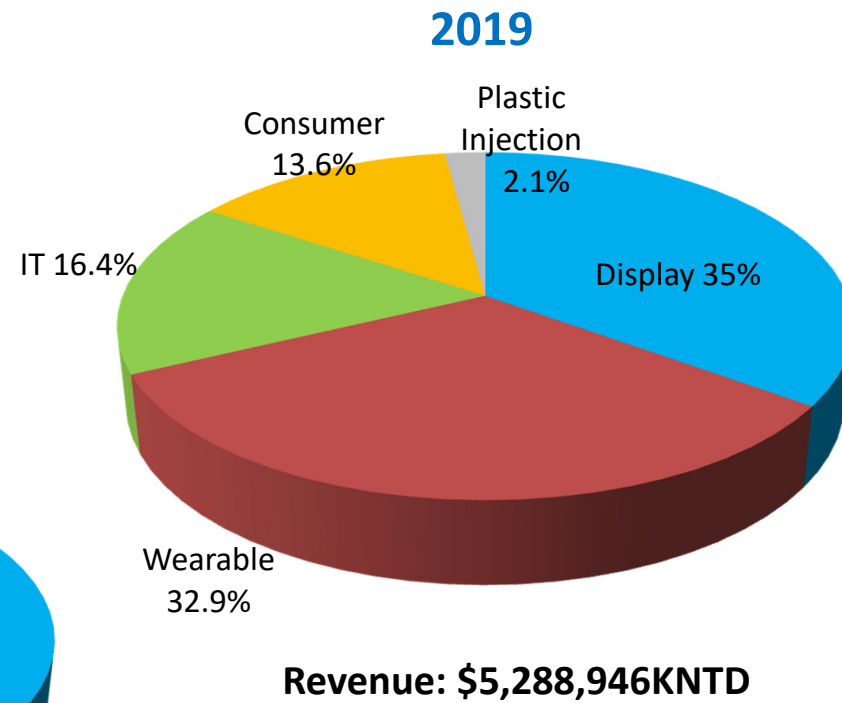
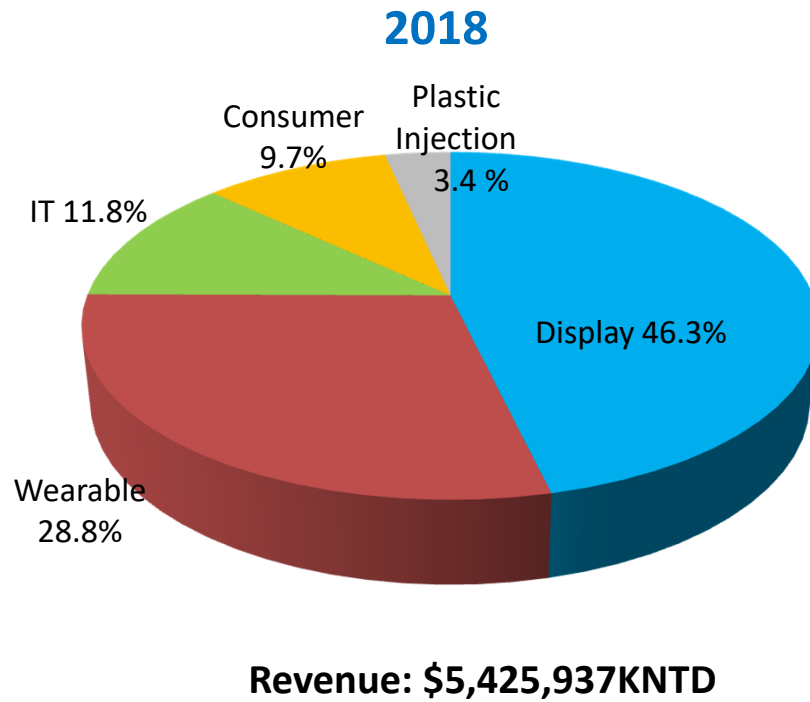
財務概況

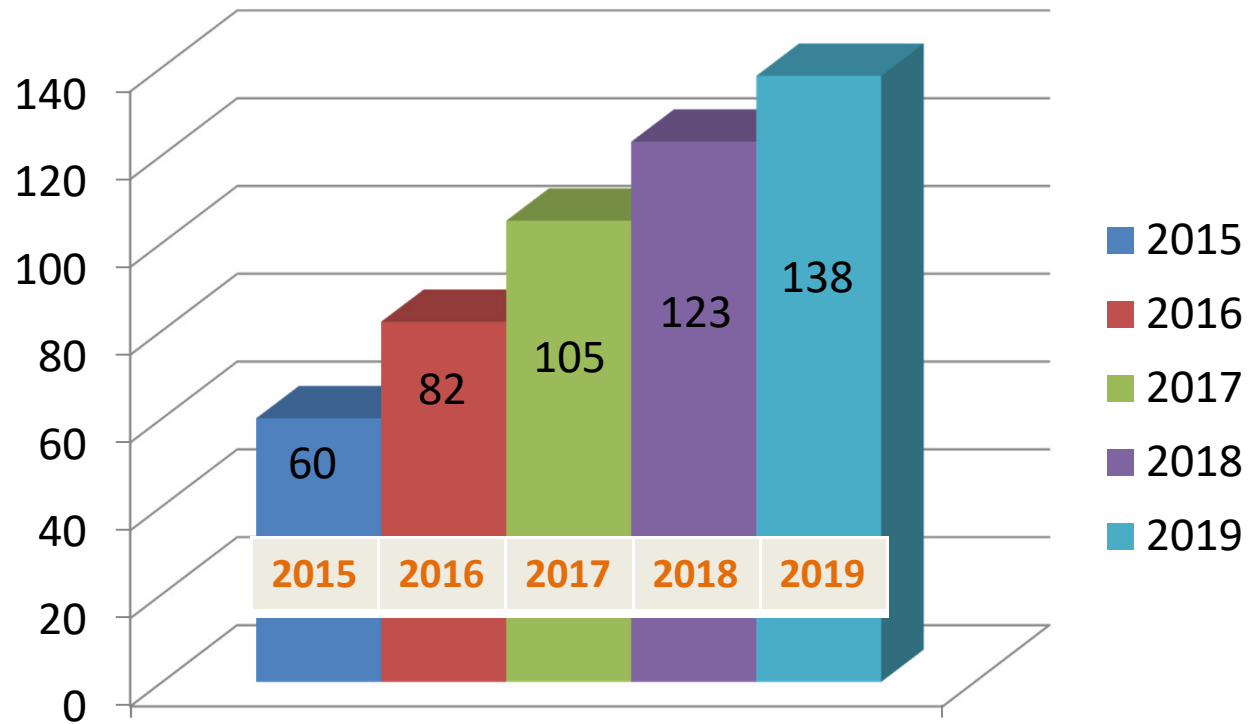
Gross Margin	14.84%	12.83%	15.67%	15.68%	20.02%	17.32%
EPS	1	0.25	0.18	0.38	1.13	0.94



# 原料價格走勢







已核准專利總數

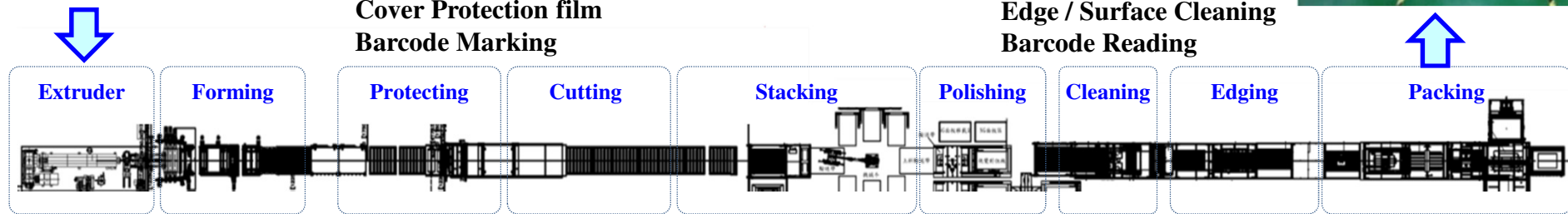
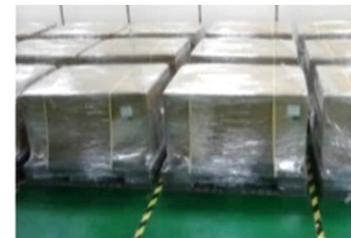


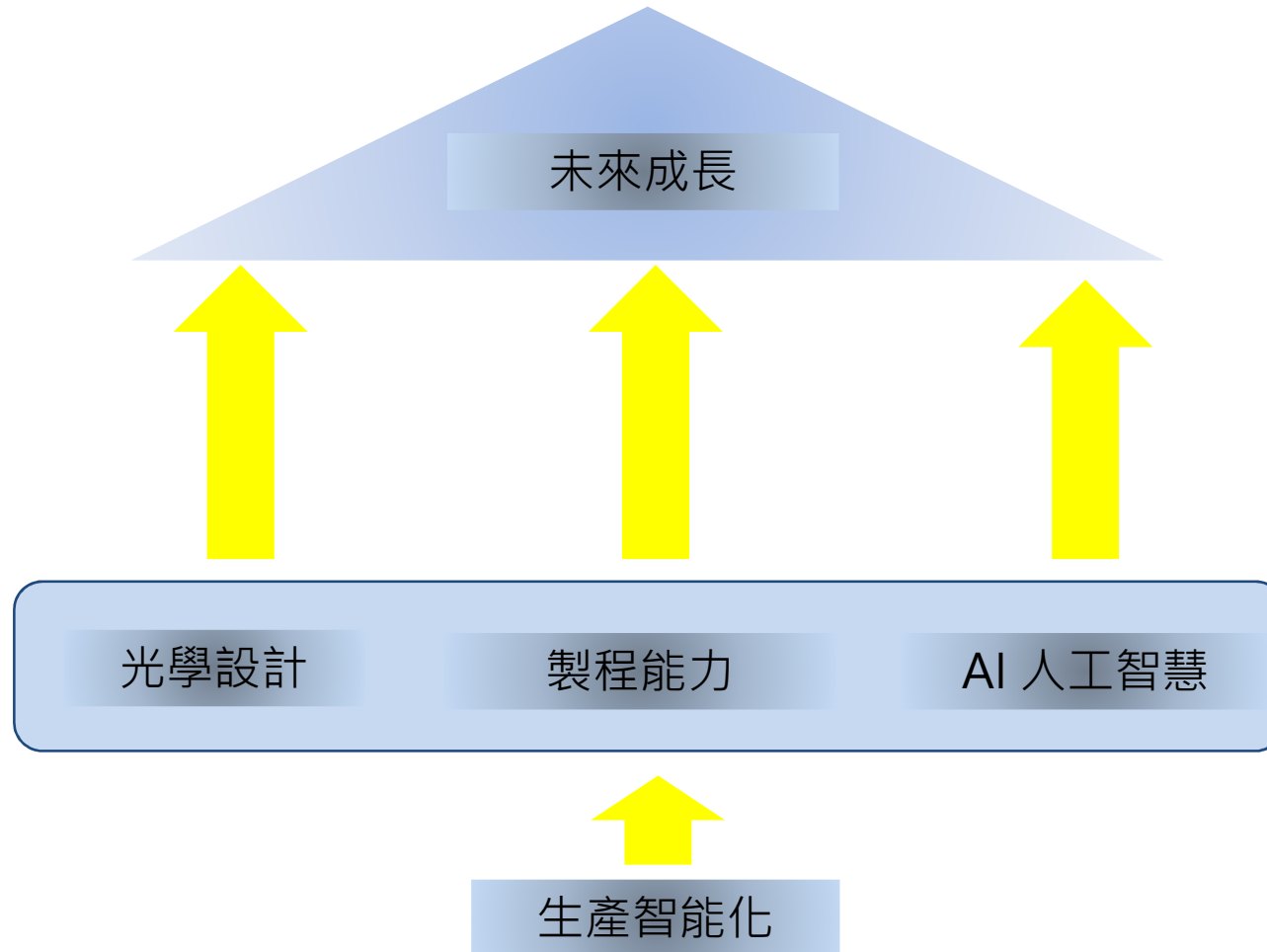
Start form Pellets



In line 100% inspection.  
Cover Protection film  
Barcode Marking

In-line Packaging.







**Thank You!**