



Global Lighting Technologies Inc.

茂林光電科技(開曼)股份有限公司

**1st Tier Light Guide
Application Company**

(4935. TW)



2020.08.13

Safe Harbor Statement

This presentation may contain various forward-looking statements and include assumptions concerning Global Lighting Technologies Co., Ltd. (GLT) operations, future results and prospects. These forward-looking statements are based on current expectations and are subject to risks and uncertainties including General economic and political conditions. GLT provides the following cautionary statements identifying important factors which, among others, could cause the actual results or events to differ materially from those set forth or implied by the forward-looking statements and related assumptions. All financial figures discussed herein are prepared pursuant to IFRS.

Such factors and other risks are discussed in greater details in the GLT filings with the Securities and Futures Bureau of the Financial Supervisory Commission, Executive Yuan, R.O.C. and the Taiwan Stock Exchange Corp.



Outline

- **Company Profile**
- **Overview of GLT Group**
- **Revenue Contribution**
- **Competitive Advantage**
- **Future Outlook**





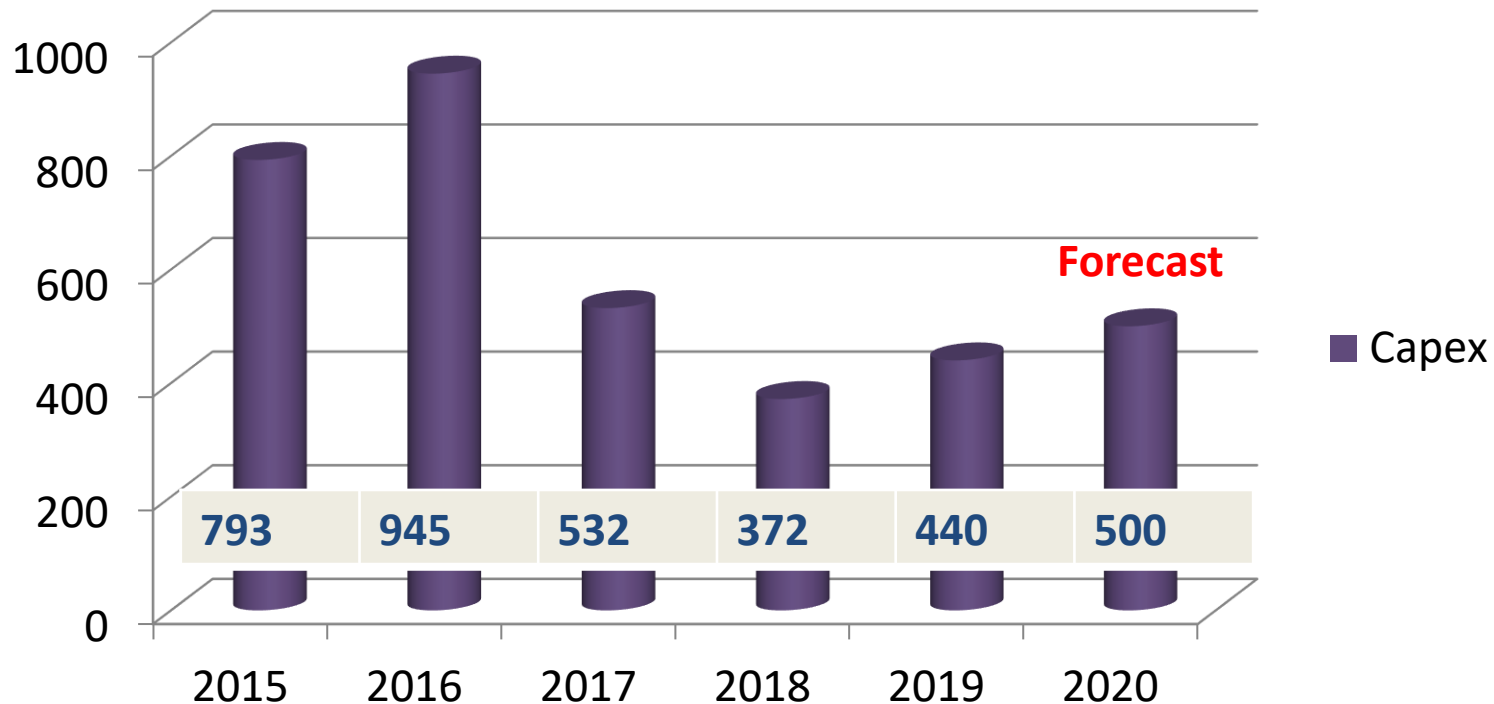
- **Incorporated Date : 2000.07.28**
- **IPO Date: 2011.07.28**
- **Company Code: 4935**
- **Capital : 1,309,370,910 NTD**
- **Main Products: Light Guides in Miscellaneous Applications**



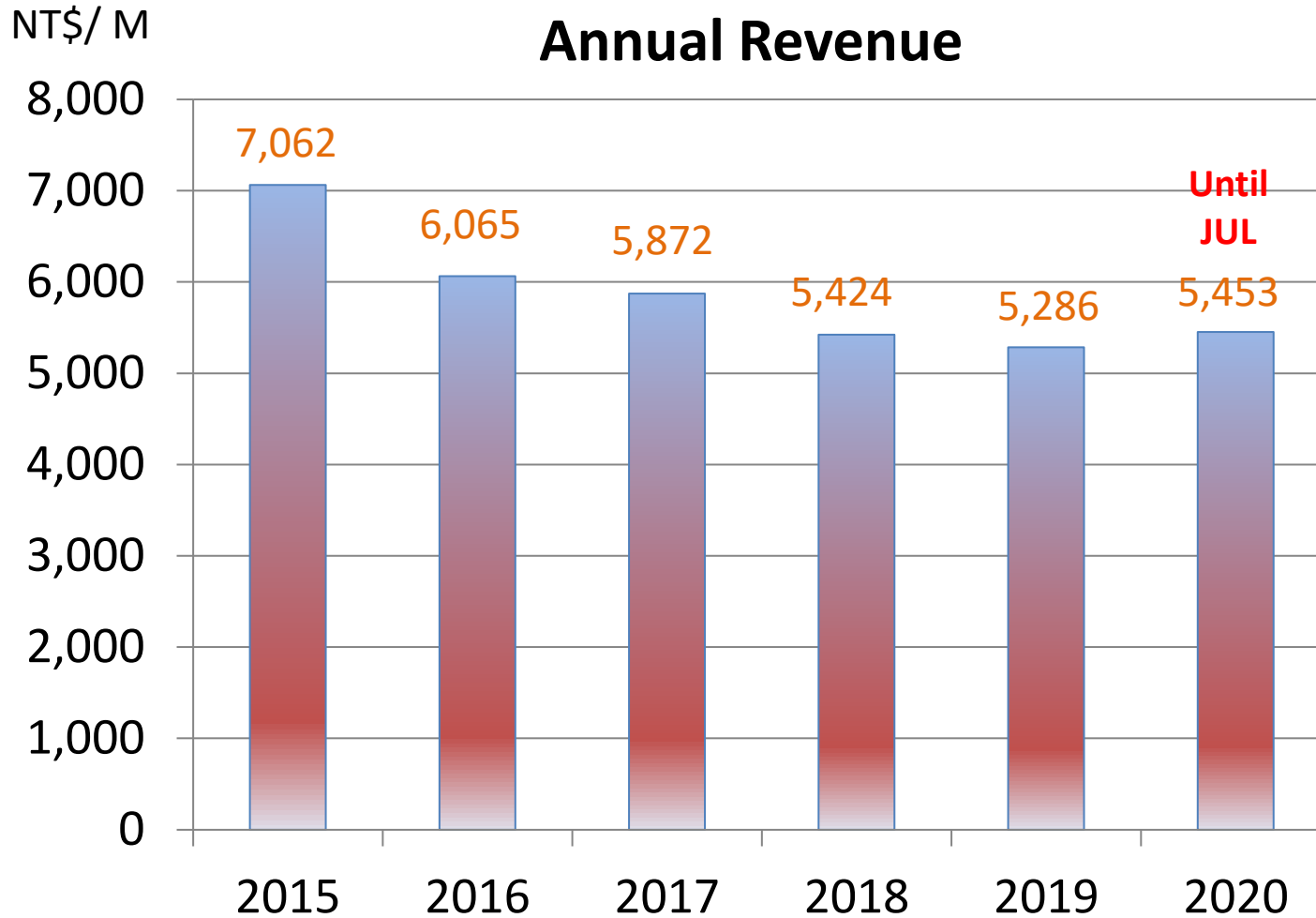


Capex

NT\$/M



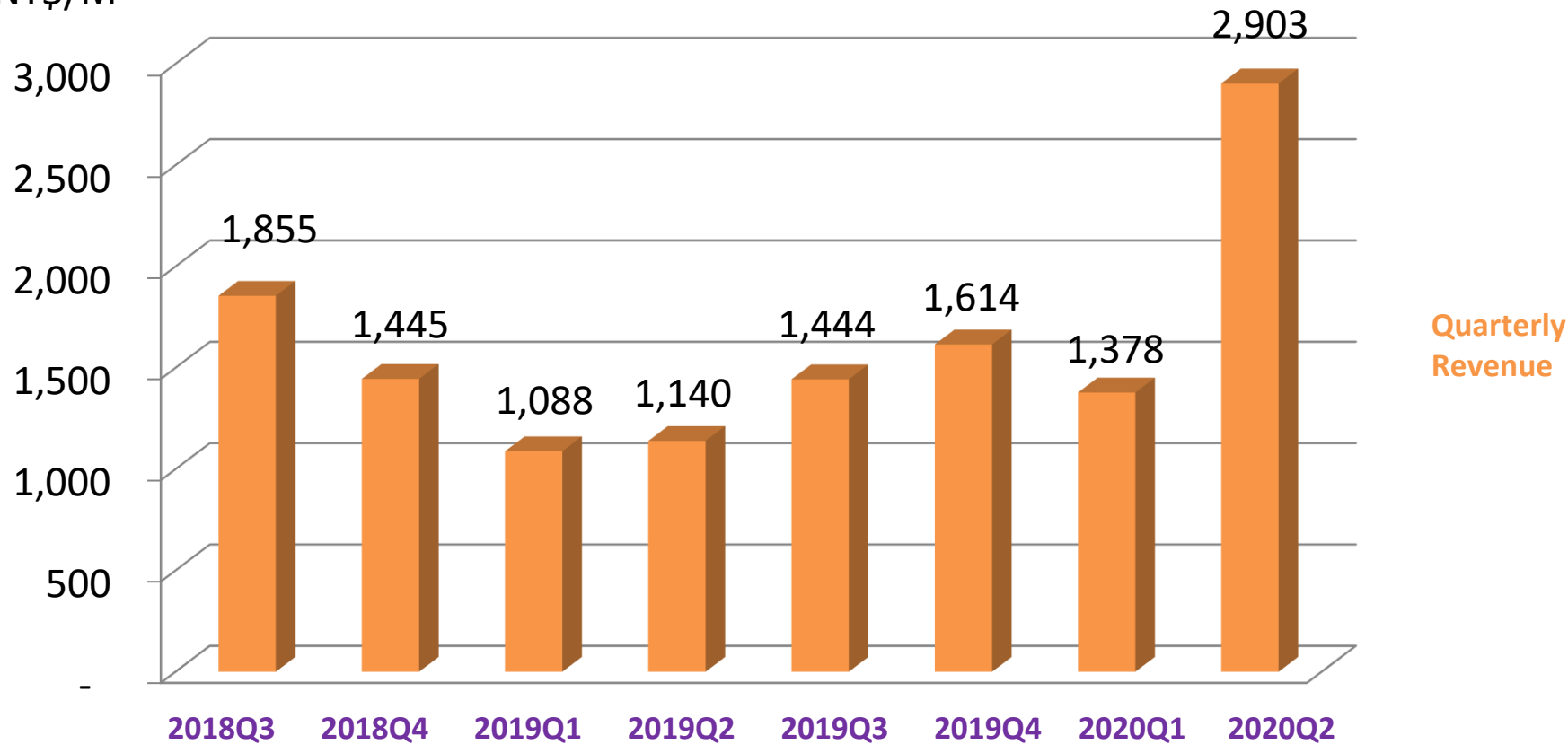
- 2020 capital expenditures are mainly invested in expansion of production lines in Shang-hai & Zhong-li plants and addition of automated facilities.



Business Income

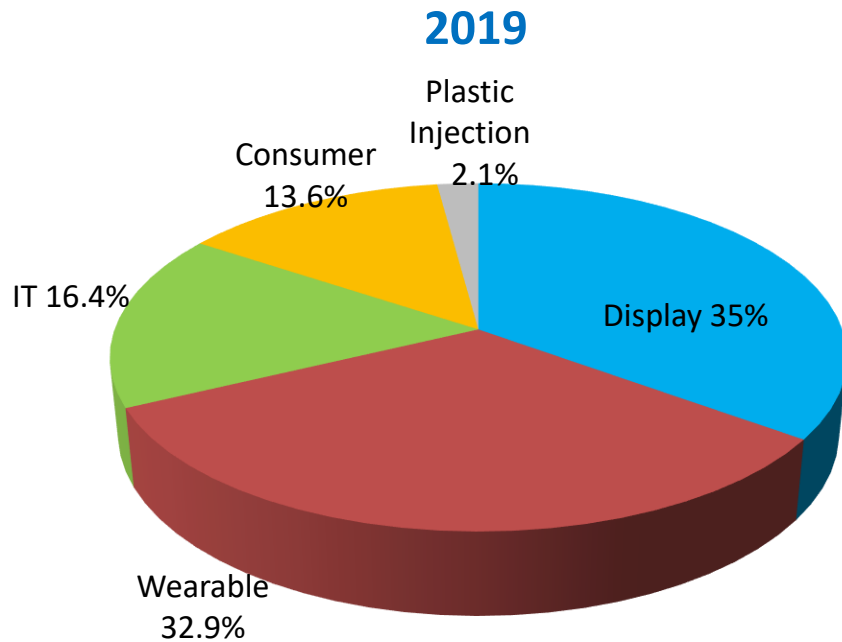


NT\$/M

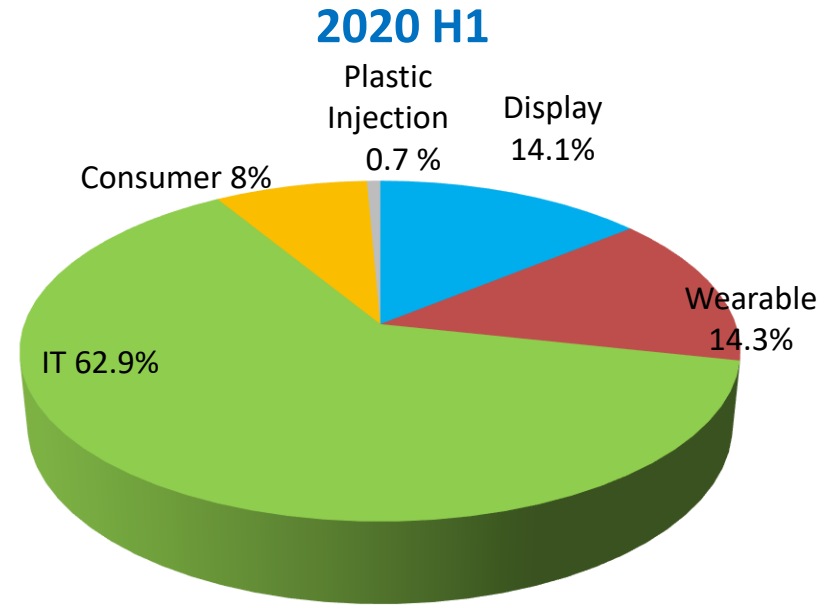


Gross Margin	14.84%	12.83%	15.67%	15.68%	20.02%	17.32%	18.74%	20.62%
EPS	1.00	0.25	0.18	0.38	1.13	0.94	0.76	2.82

Revenue Breakdown



Revenue: \$5,286,248KNTD



Revenue: \$4,281,724KNTD



- **Strengthen the Capability of Core Optical Technology**
- **Expand the Applications of Light-guiding Technology**
- **Enhance Intelligent Manufacturing Technology**



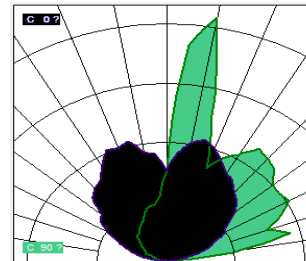
➤ Strengthen the Capability of Core Optical Technology

- Develop new optical patterns to enhance the optical efficiency for miscellaneous applications

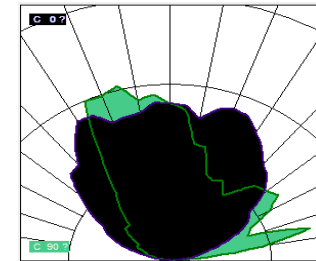
- Back-lit Keyboards
- Reflective-typed Displays
- Large-sized Displays

- Enhance the Capability of Optical Precision Machining

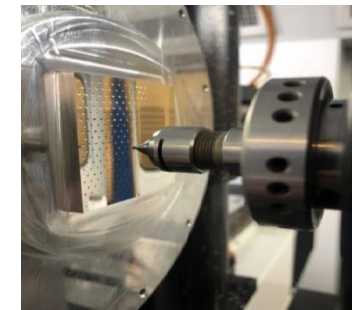
- Wedge-typed, Non-planar Light Guide Plates
- Applications of Curved Light-guiding
- Nano-leveled Machining Process



Specular reflection



Lambertian reflection

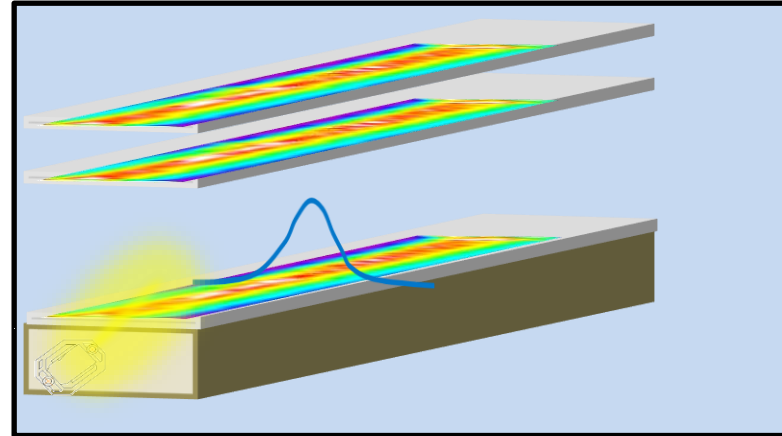


■ Non-Planar Patterning by CNC Machining

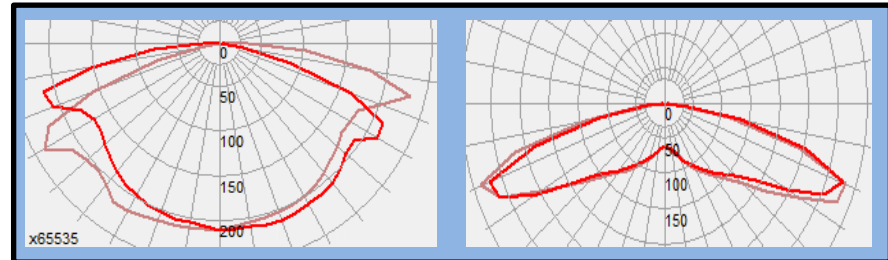


➤ Expand the Applications of Light-guiding Technology

- Light Source of Image-capturing Devices
- Application of Gaming Products
- Devices with Special Brightness Distribution Profile



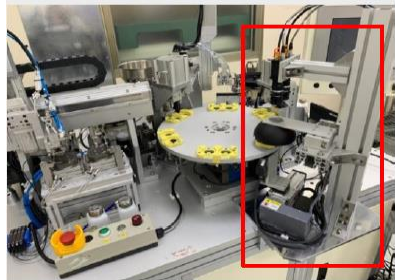
- Light Source of Image-capturing Devices



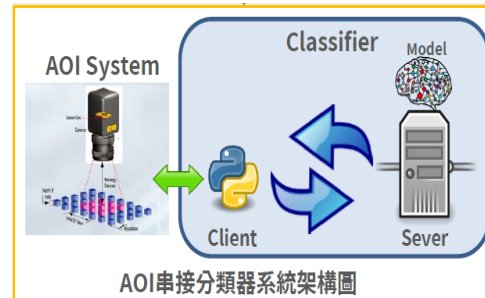
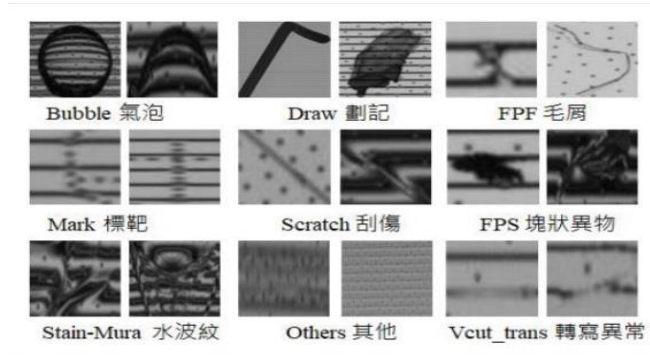
- Devices with Special Brightness Distribution Profile

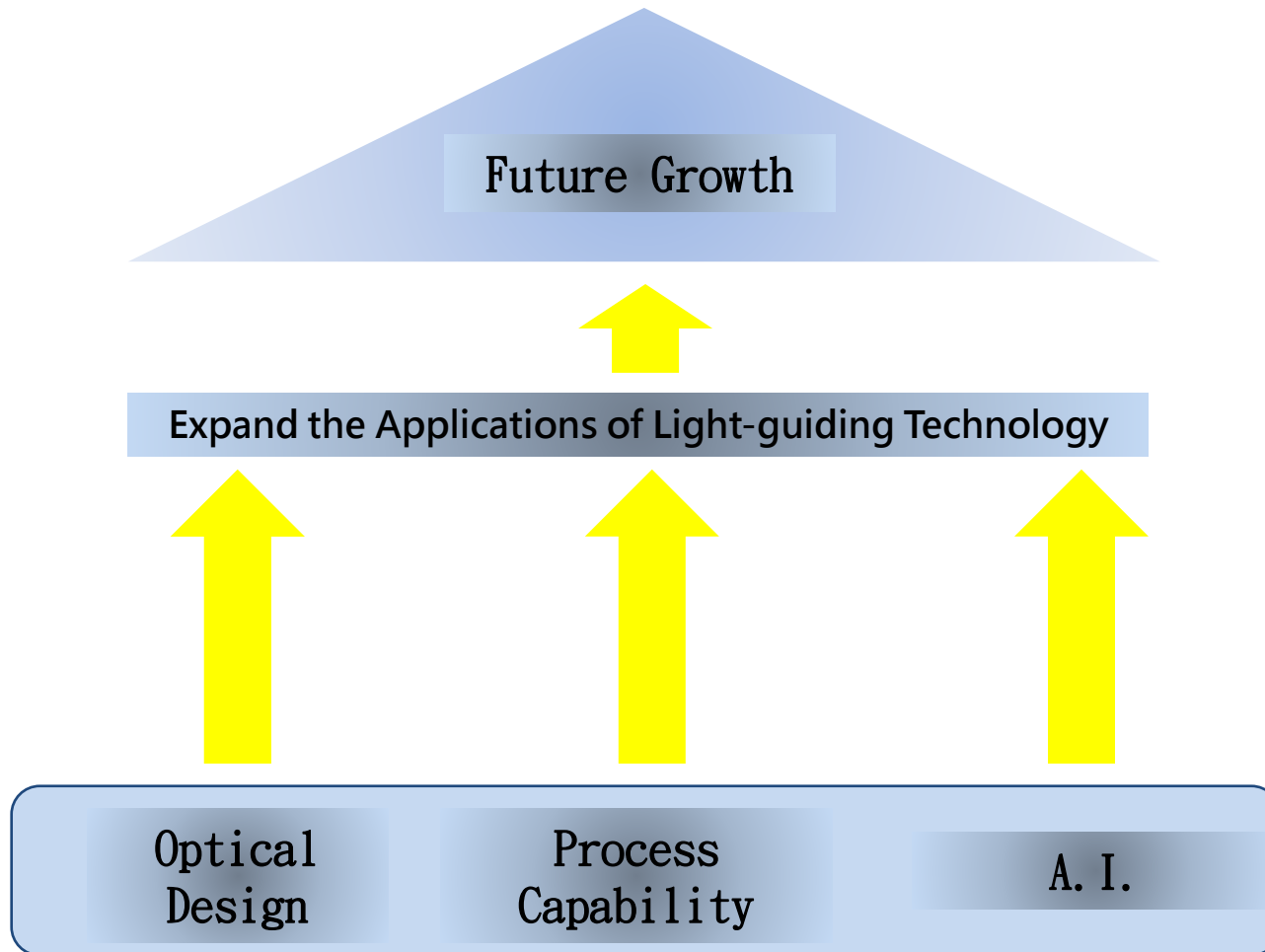


- Enhance Intelligent Manufacturing Technology
 - Automated Production & Enhancement of Inspection Capability
 - Product Traceability & Big Data Analysis



■ Automation Process







GLOBAL LIGHTING

Thanks !!!