

# Global Lighting Technologies Inc.

茂林光電科技(開曼)股份有限公司

**1<sup>st</sup> Tier Light Guide  
Application Company**

(4935. TW)



2020.04.10

# Safe Harbor Statement

This presentation may contain various forward-looking statements and include assumptions concerning Global Lighting Technologies Co., Ltd. (GLT) operations, future results and prospects. These forward-looking statements are based on current expectations and are subject to risks and uncertainties including General economic and political conditions. GLT provides the following cautionary statements identifying important factors which, among others, could cause the actual results or events to differ materially from those set forth or implied by the forward-looking statements and related assumptions. All financial figures discussed herein are prepared pursuant to IFRS.

Such factors and other risks are discussed in greater details in the GLT filings with the Securities and Futures Bureau of the Financial Supervisory Commission, Executive Yuan, R.O.C. and the Taiwan Stock Exchange Corp.



# Outline

- **Company Profile**
- **Overview of GLT Group**
- **Revenue Contribution**
- **Competitive Advantage**
- **Future Prospects**





- **Incorporated Date : 2000.07.28**
- **IPO Date: 2011.07.28**
- **Company Code: 4935**
- **Capital : 1,309,370,910 NTD**
- **Main Products: Light Guides in Miscellaneous Applications**



**Cleveland, Ohio**



**Su-zhou, China**



**Shang-hai, China**



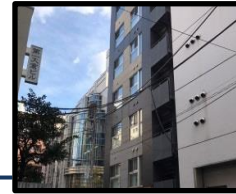
**Zhong-shan, China**



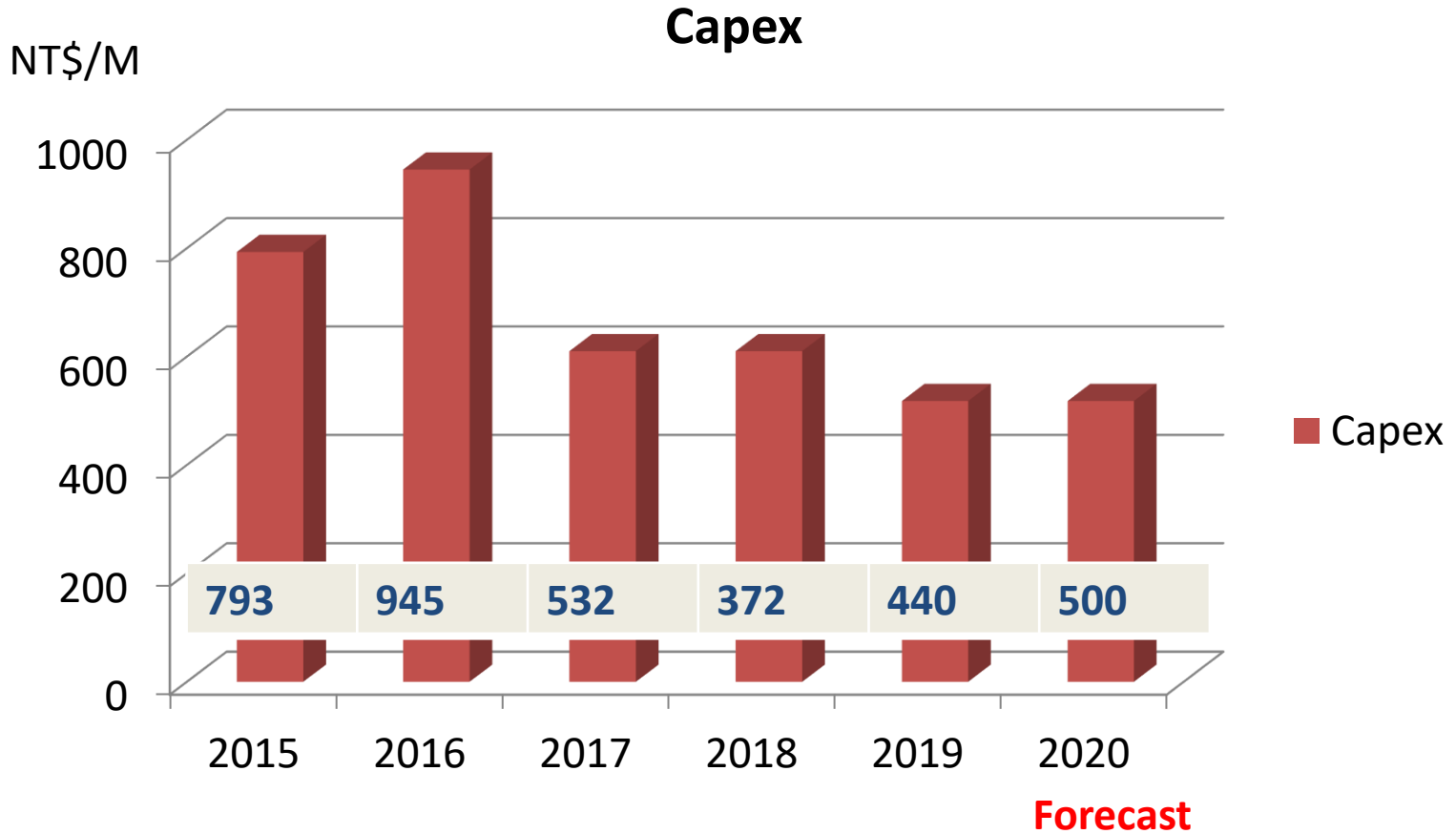
**Tong-luo, Taiwan**

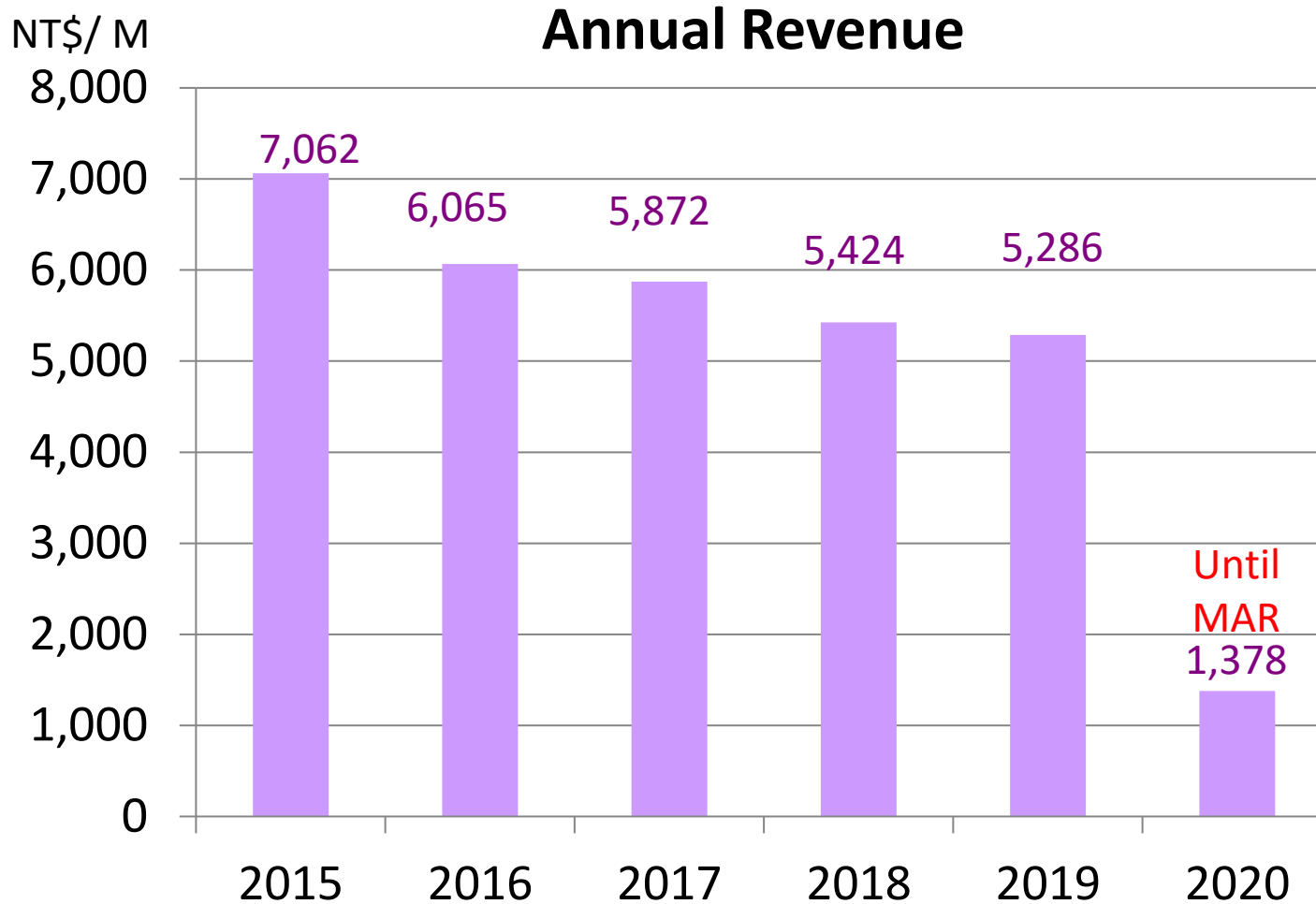


**Zhong-Li, Taiwan**

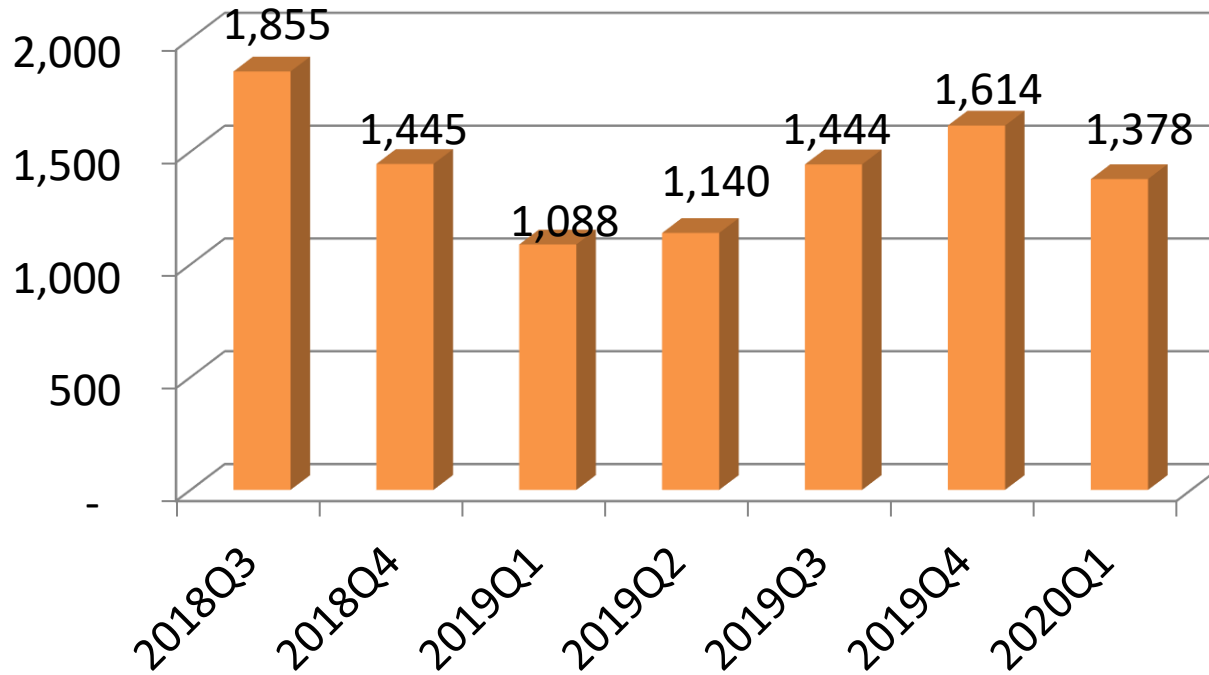


**Tokyo, Japan**





# Business Income

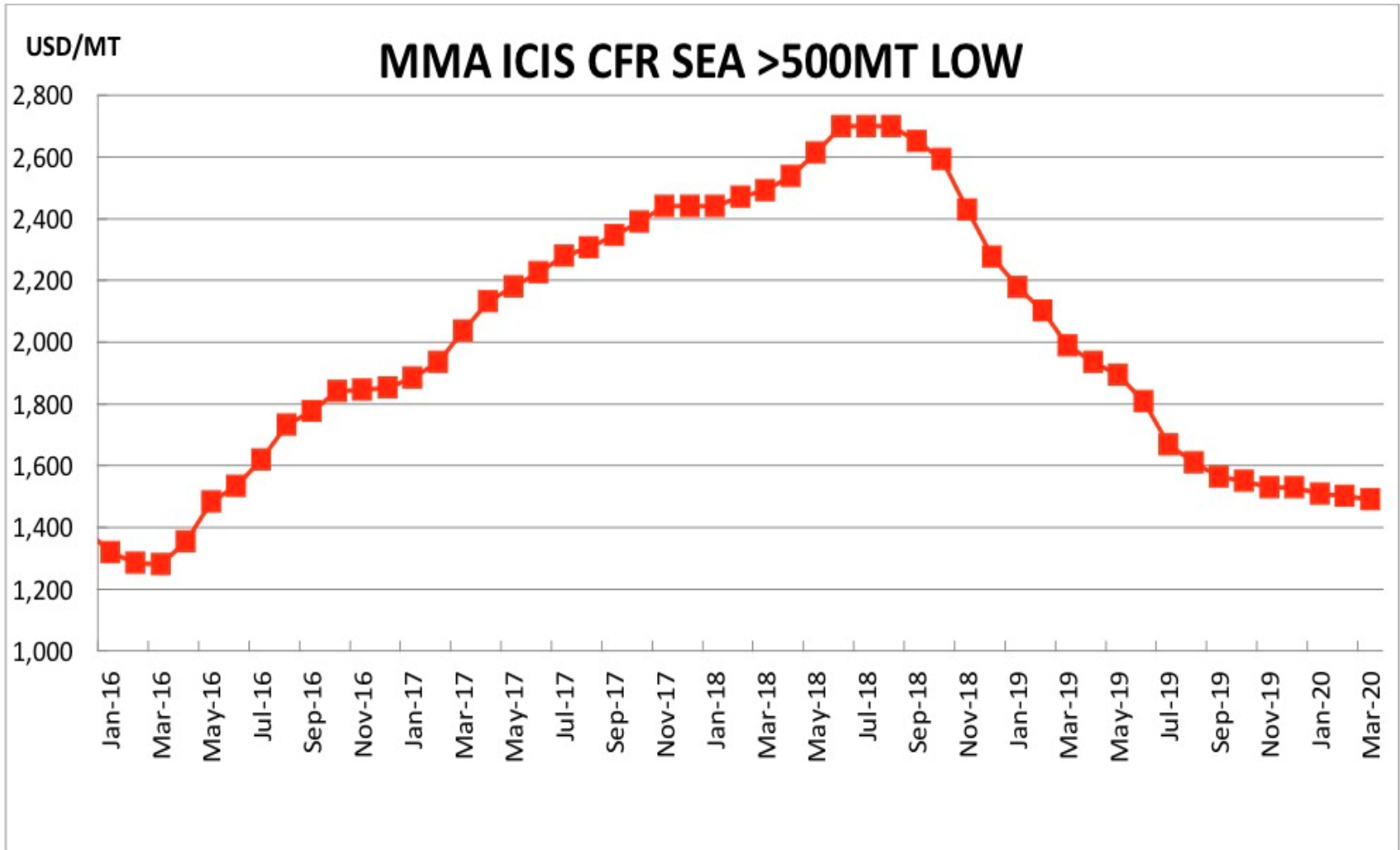


■ Quarterly Revenue

<b>Gross Margin</b>	<b>14.84%</b>	<b>12.83%</b>	<b>15.67%</b>	<b>15.68%</b>	<b>20.02%</b>	<b>17.32%</b>
<b>EPS</b>	<b>1</b>	<b>0.25</b>	<b>0.18</b>	<b>0.38</b>	<b>1.13</b>	<b>0.94</b>



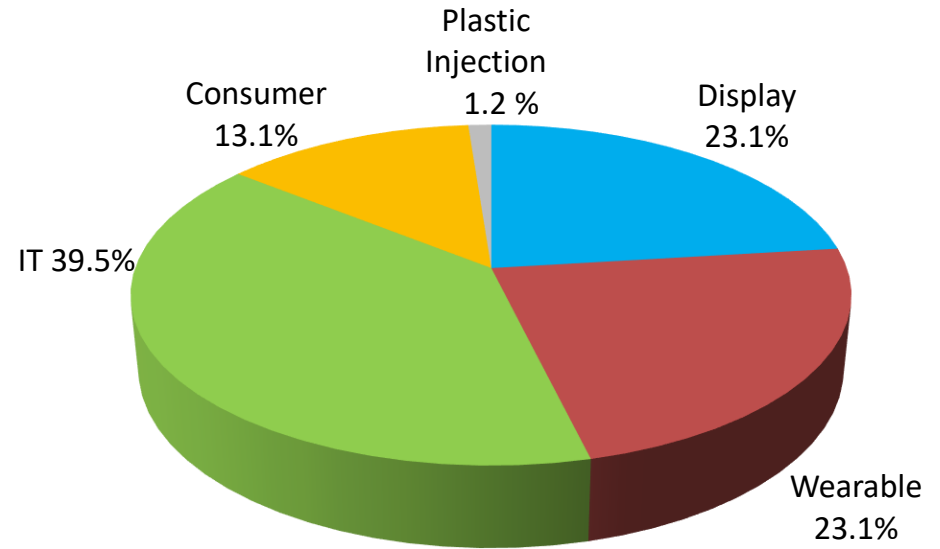
# Raw Material Cost Trend



# Revenue Breakdown

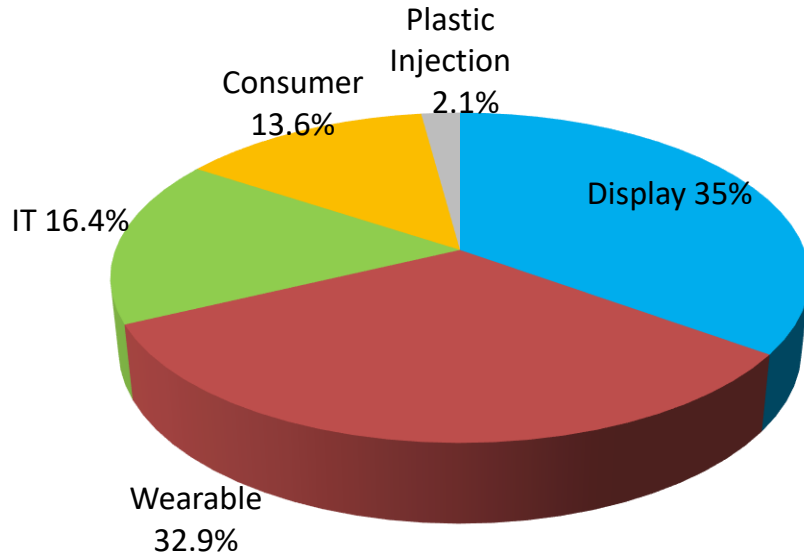


## 2020Q1

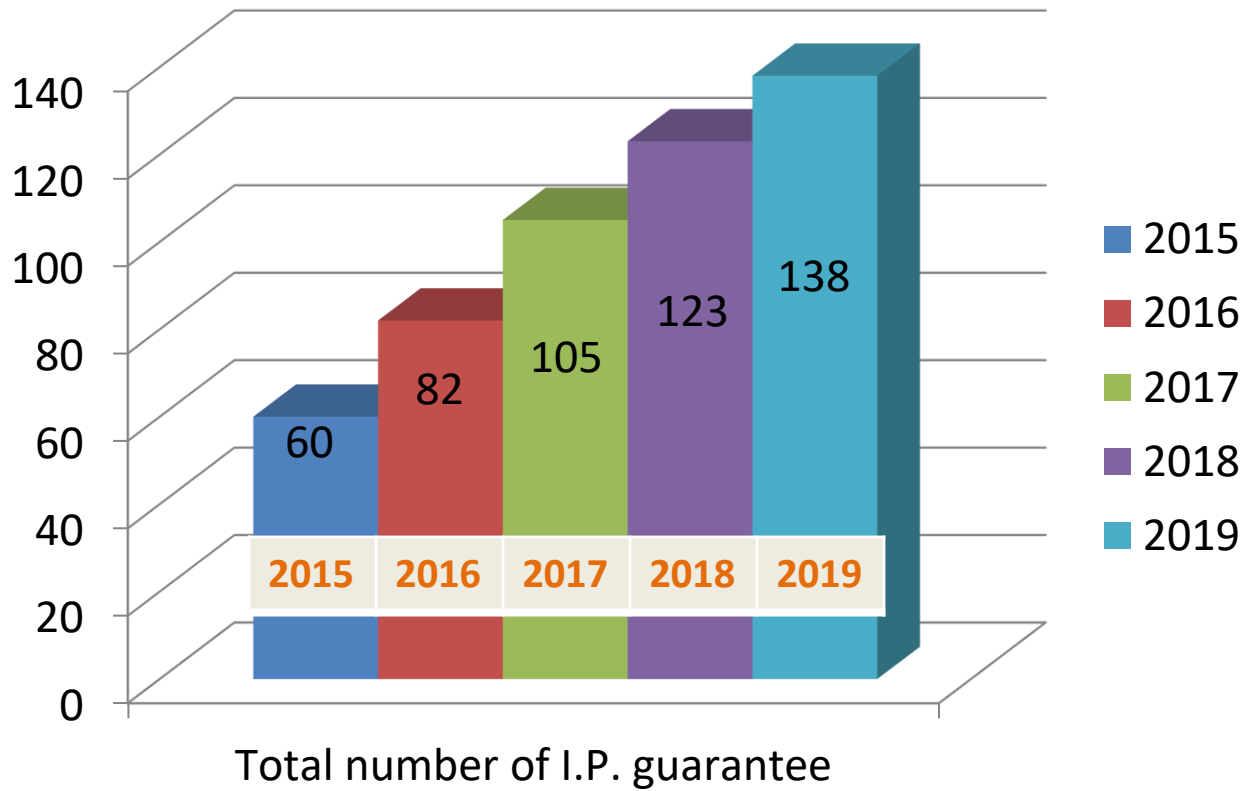


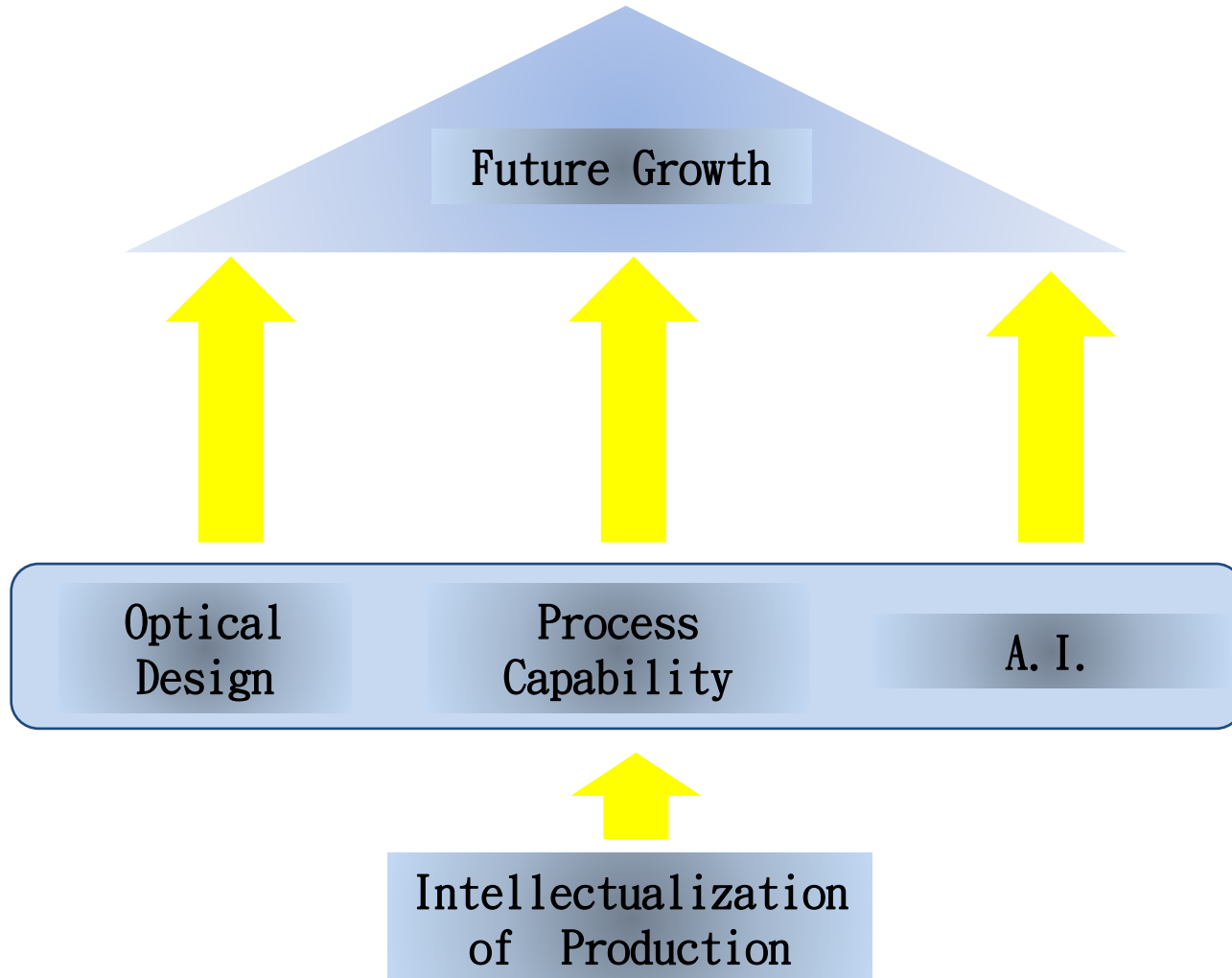
Revenue: \$1,378,437KNTD

## 2019



Revenue: \$5,286,248KNTD







## Taiwan Plant:

- Follow the guidelines of manufacturing sector's response to the severe pneumonia issued by the Government to formulate miscellaneous measurements.
- Set up a epidemic-response team to draft a variety of prevention measurements, including diversion of personnel & work zone, working home. Depending upon the development of the epidemic situation, those actions would be executed accordingly.

## US Office:

Following advice from local government, personnel work home and operation remains as usual.

## China Plants:

Executing measurements formulated per local governments' epidemic-prevention requests, all plants already resumed 80~90% of normal operation.

**Frequent Hand-Washing, Mask Wearing, Less Gathering**



GLOBAL LIGHTING

**Thanks !!!**