



Global Lighting Technologies Inc.

茂林光電科技(開曼)股份有限公司

**1st Tier Light Guide
Application Company**

(4935. TW)



2020.03.24

Safe Harbor Statement

This presentation may contain various forward-looking statements and include assumptions concerning Global Lighting Technologies Co., Ltd. (GLT) operations, future results and prospects. These forward-looking statements are based on current expectations and are subject to risks and uncertainties including General economic and political conditions. GLT provides the following cautionary statements identifying important factors which, among others, could cause the actual results or events to differ materially from those set forth or implied by the forward-looking statements and related assumptions. All financial figures discussed herein are prepared pursuant to IFRS.

Such factors and other risks are discussed in greater details in the GLT filings with the Securities and Futures Bureau of the Financial Supervisory Commission, Executive Yuan, R.O.C. and the Taiwan Stock Exchange Corp.



Outline

- **Company Profile**
- **Overview of GLT Group**
- **Revenue Contribution**
- **Competitive Advantage**
- **Future Prospects**

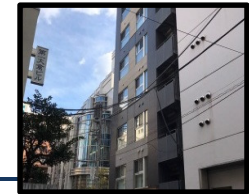




Company Profile



- **Incorporated Date : 2000.07.28**
- **IPO Date: 2011.07.28**
- **Company Code: 4935**
- **Capital : 1,309,370,910 NTD**
- **Main Products: Light Guides in Miscellaneous Applications**



Tokyo, Japan



Cleveland, Ohio



Su-zhou, China



Shang-hai, China



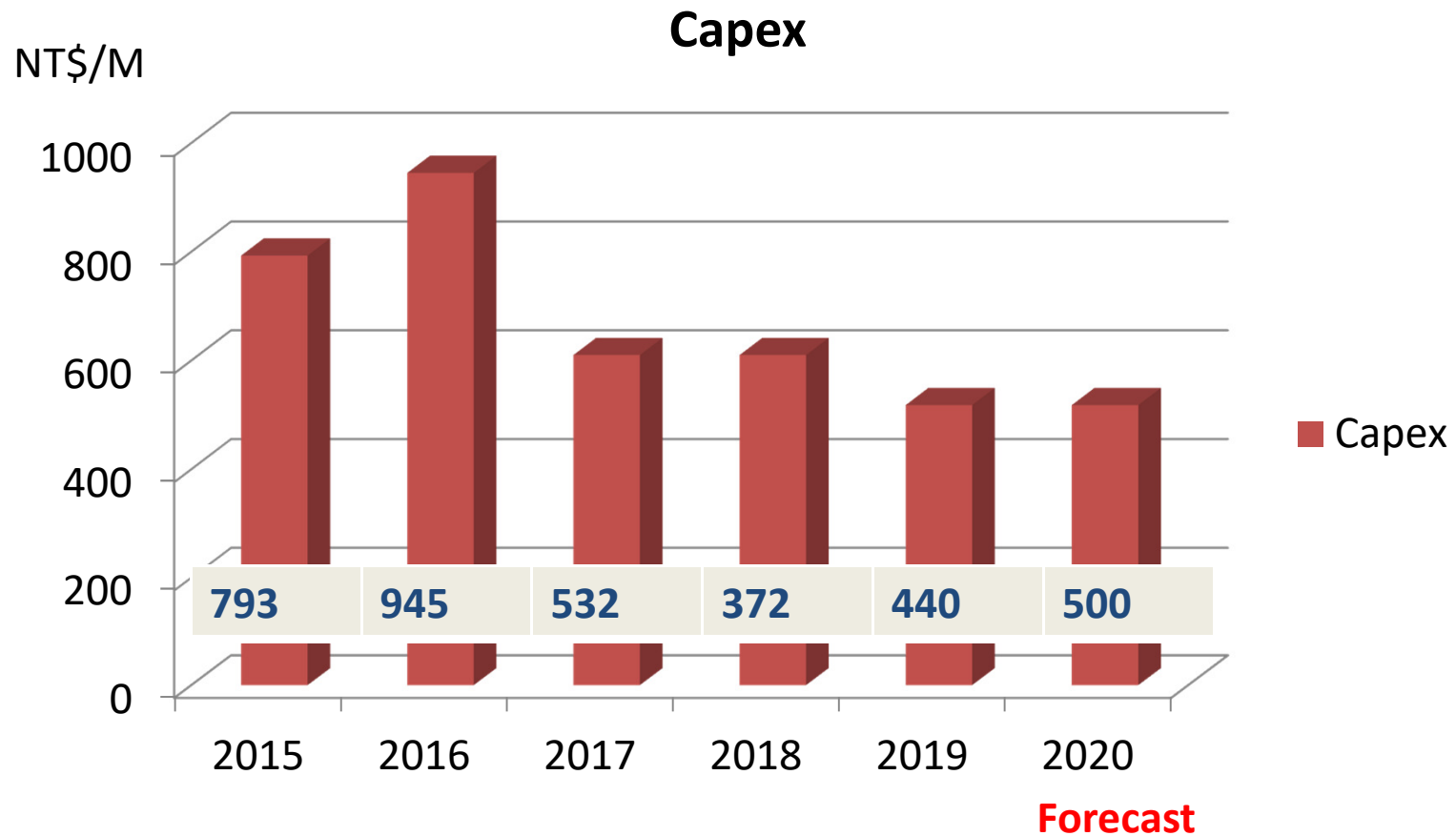
Zhong-shan, China

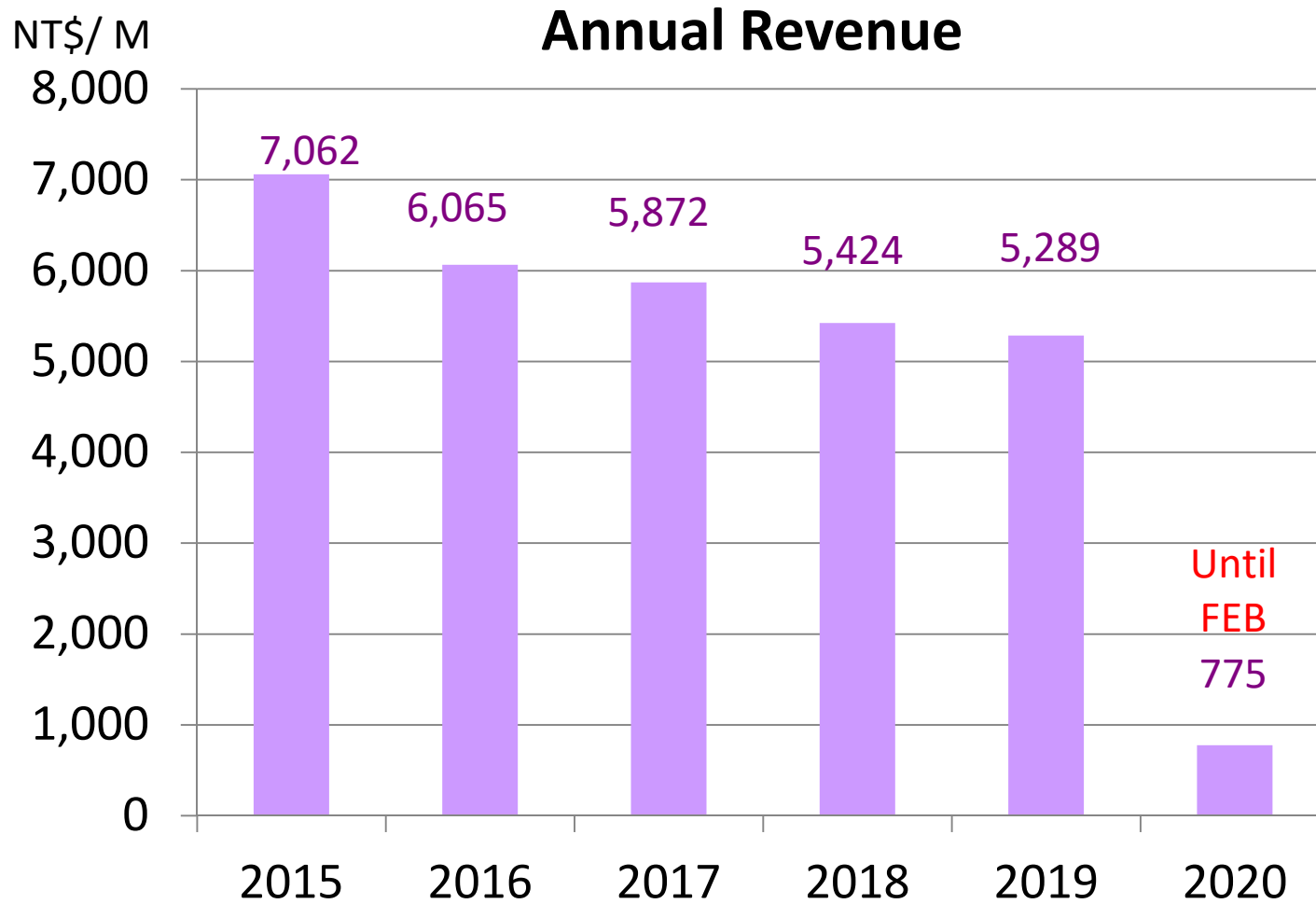


Tong-uo, Taiwan

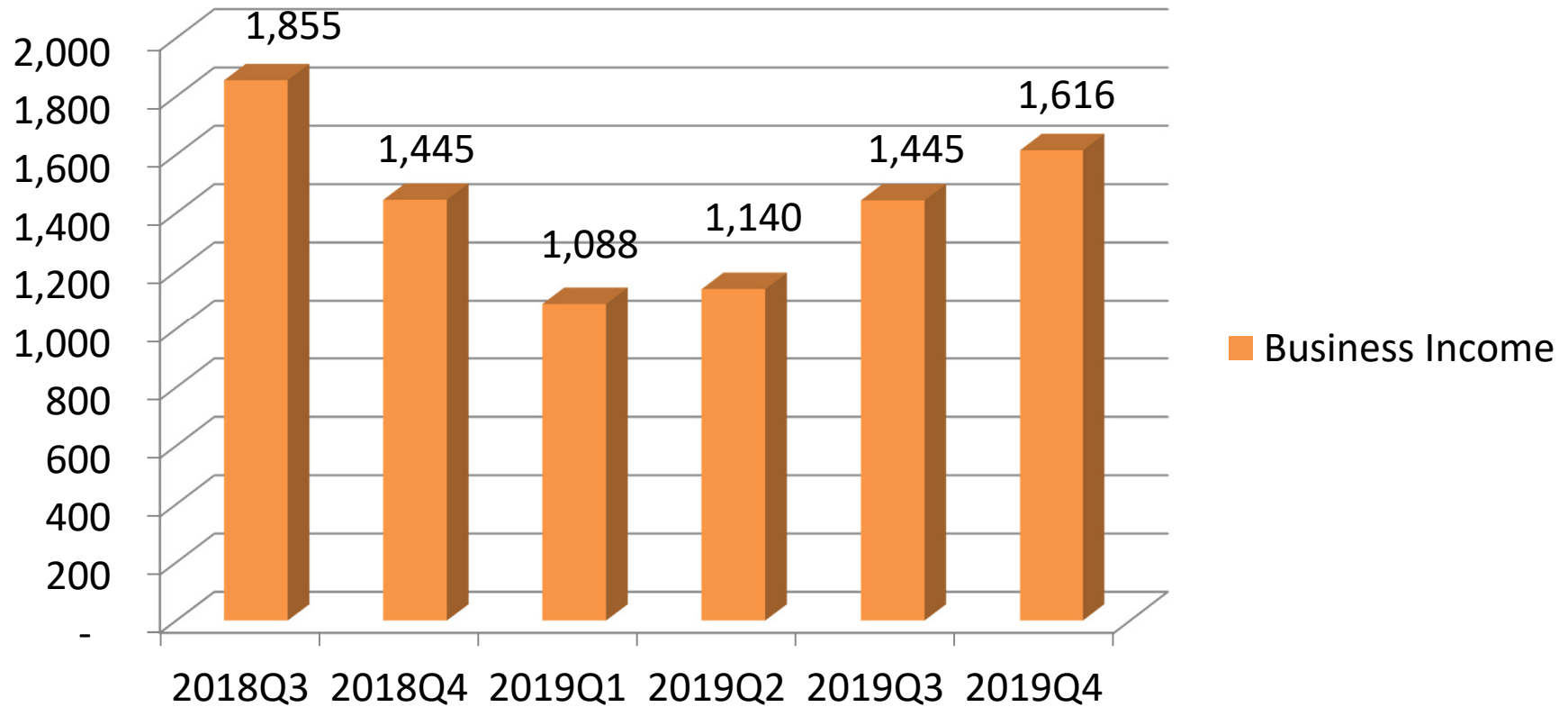


Zhong-Li, Taiwan



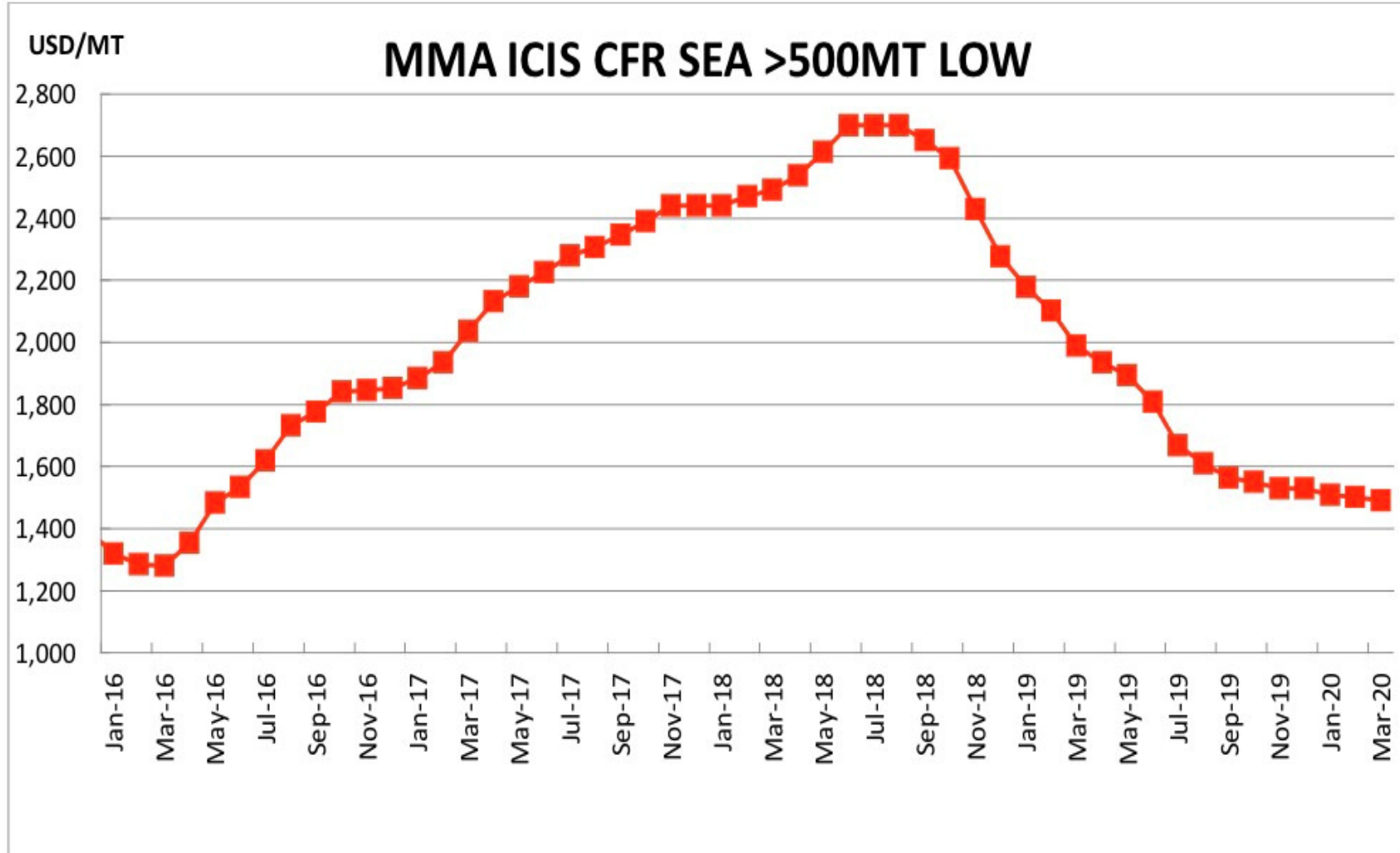


Business Income

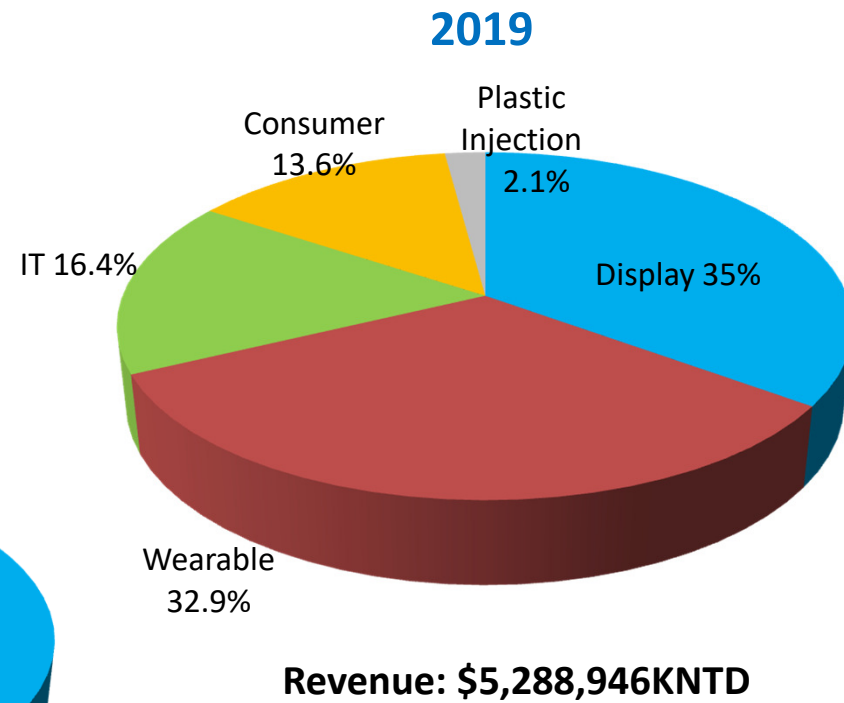
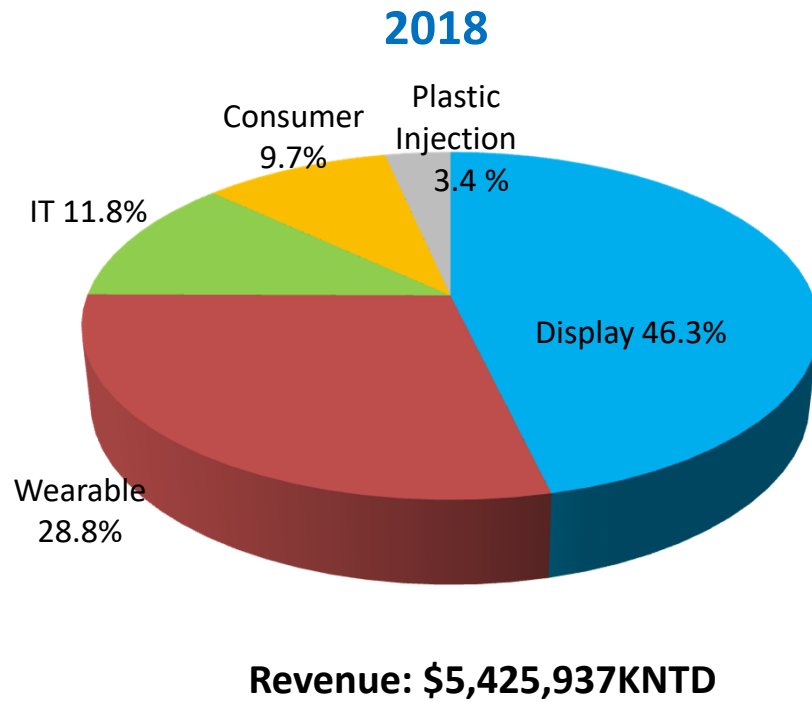


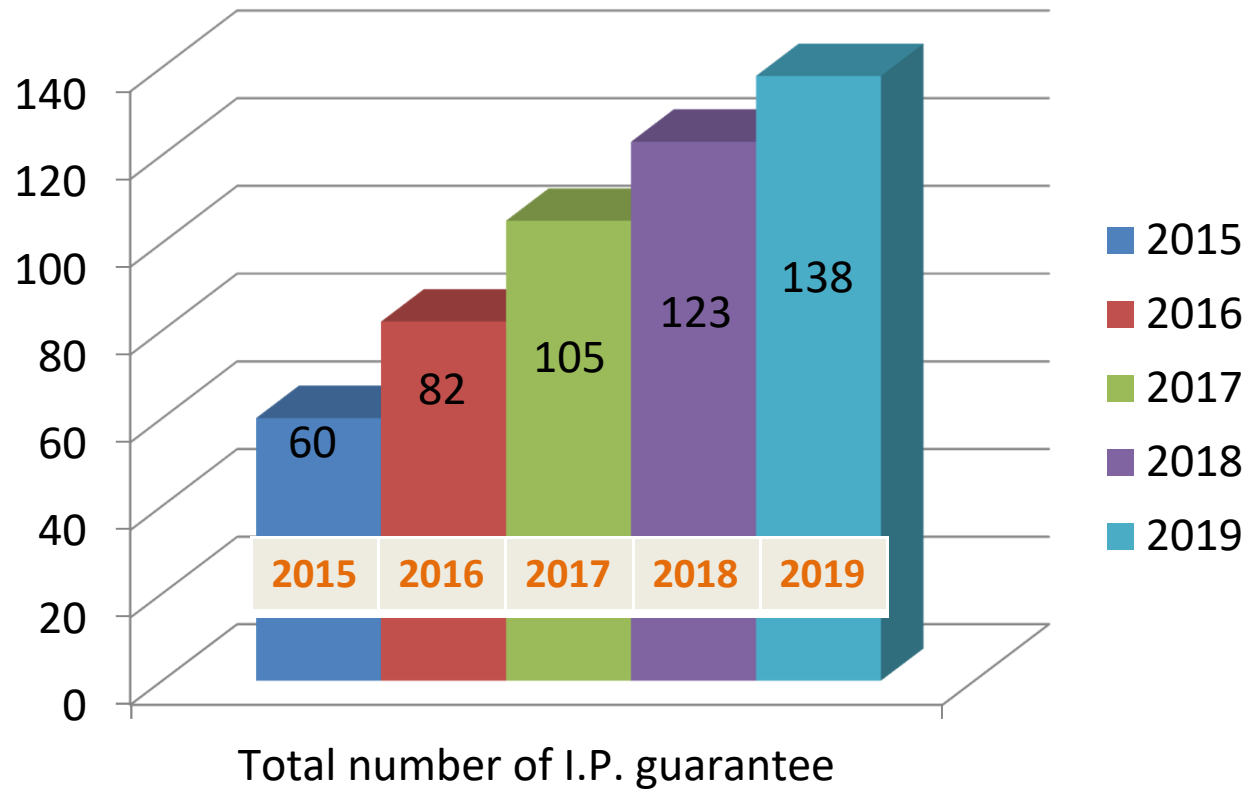
Gross Margin	14.84%	12.83%	15.67%	15.68%	20.02%	17.32%
EPS	1	0.25	0.18	0.38	1.13	0.94

Raw Material Cost Trend



Revenue Breakdown





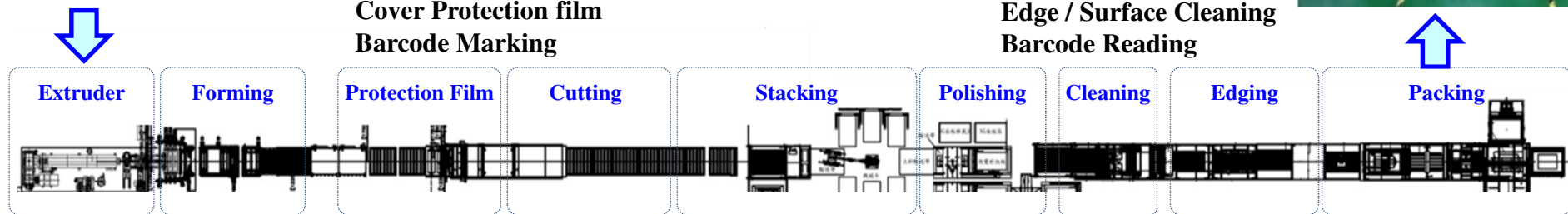
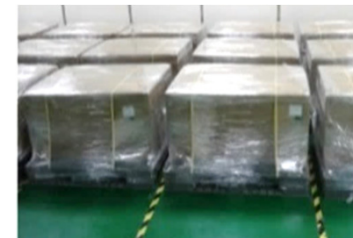


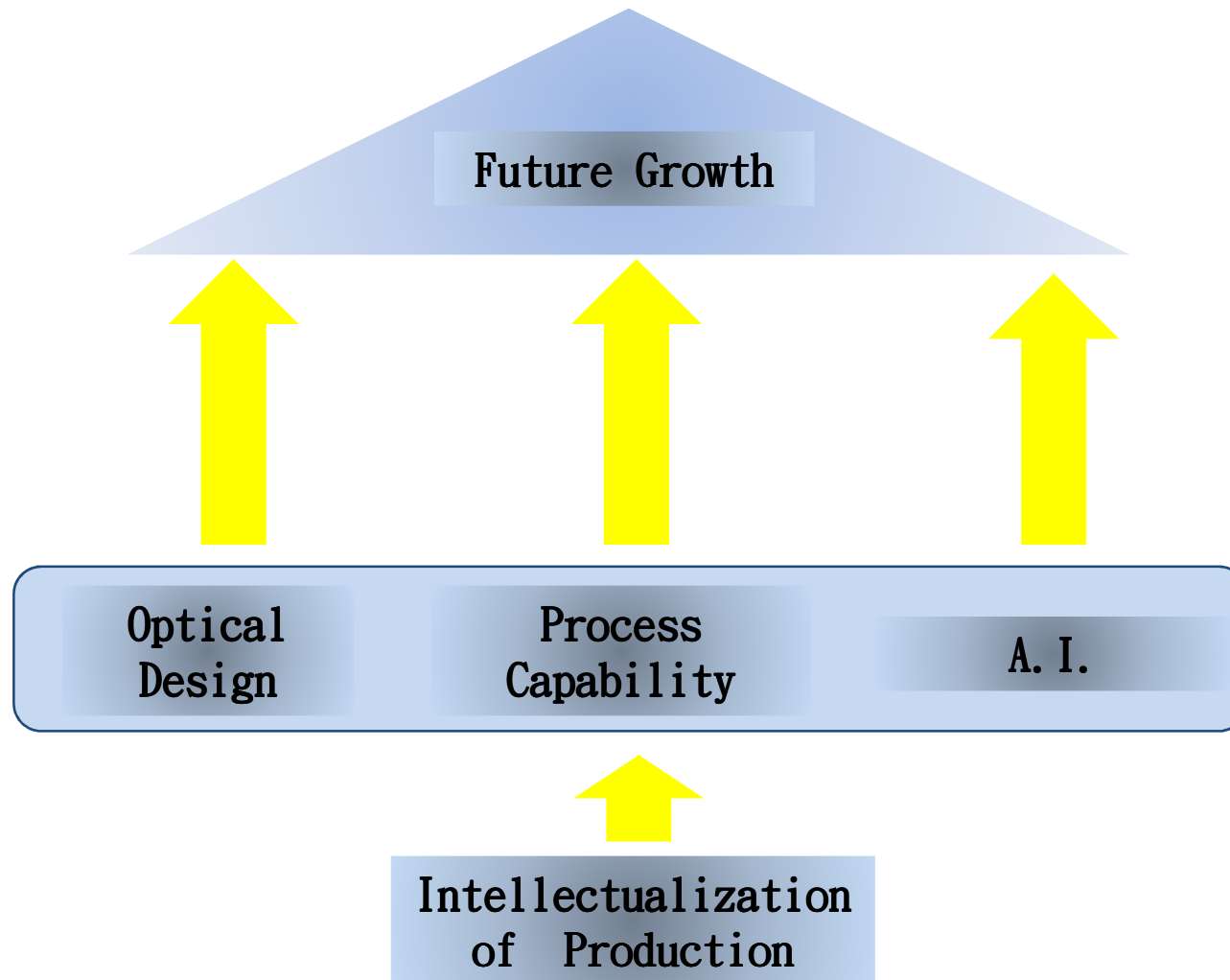
Start from Pellets



In line 100% inspection.
Cover Protection film
Barcode Marking

In-line Packaging.







Thanks !!!