

Global Lighting Technologies Inc.

茂林光電科技(開曼)股份有限公司

**1st Tier Light Guide
Application Company**

(4935. TW)



2019.11.27

Safe Harbor Statement

This presentation may contain various forward-looking statements and include assumptions concerning Global Lighting Technologies Co., Ltd. (GLT) operations, future results and prospects. These forward-looking statements are based on current expectations and are subject to risks and uncertainties including General economic and political conditions. GLT provides the following cautionary statements identifying important factors which, among others, could cause the actual results or events to differ materially from those set forth or implied by the forward-looking statements and related assumptions. All financial figures discussed herein are prepared pursuant to IFRS.

Such factors and other risks are discussed in greater details in the GLT filings with the Securities and Futures Bureau of the Financial Supervisory Commission, Executive Yuan, R.O.C. and the Taiwan Stock Exchange Corp.



Outline

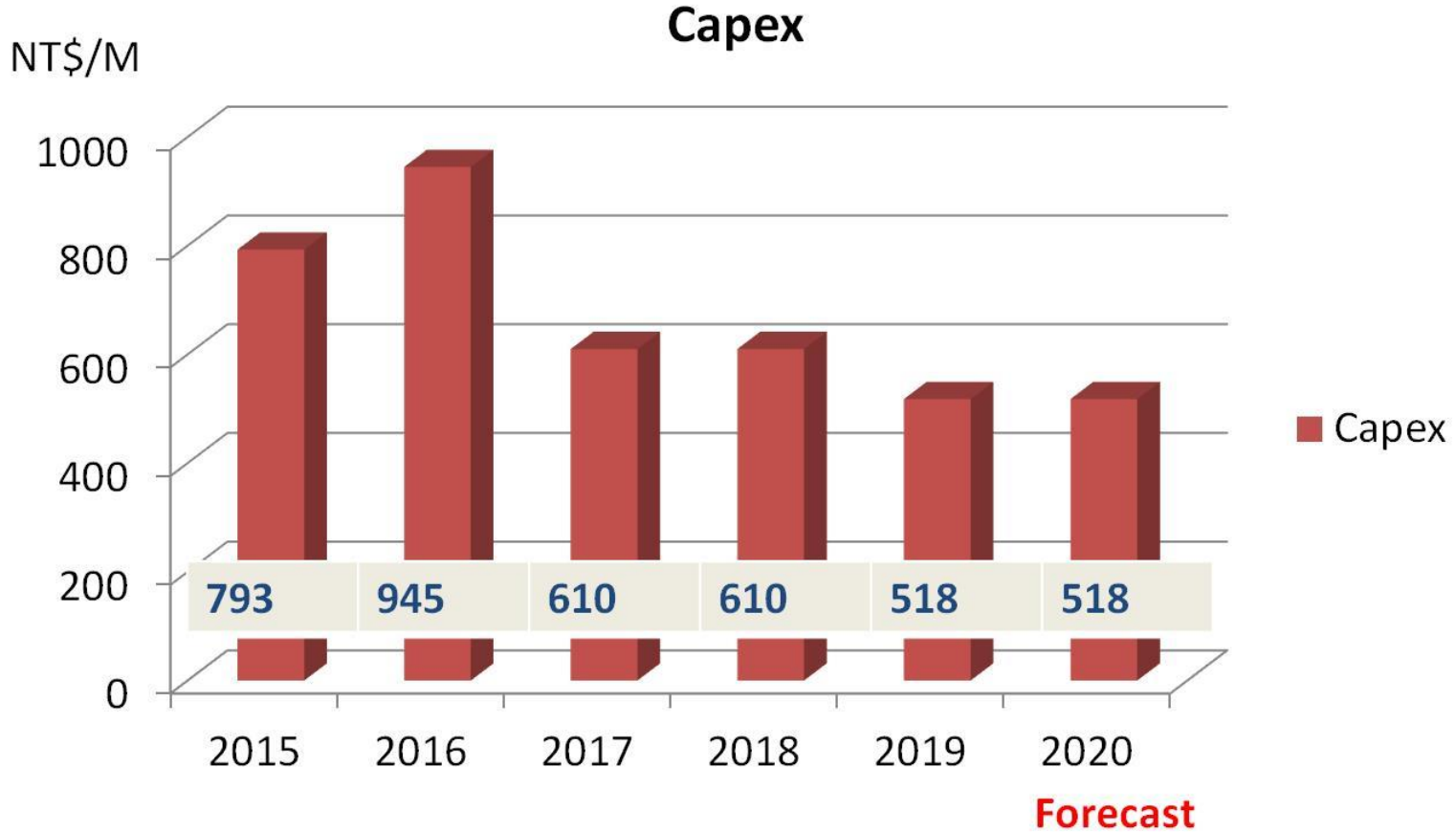
- **Company Profile**
- **Overview of GLT Group**
- **Revenue Contribution**
- **Competitive Advantage**
- **Future Prospects**

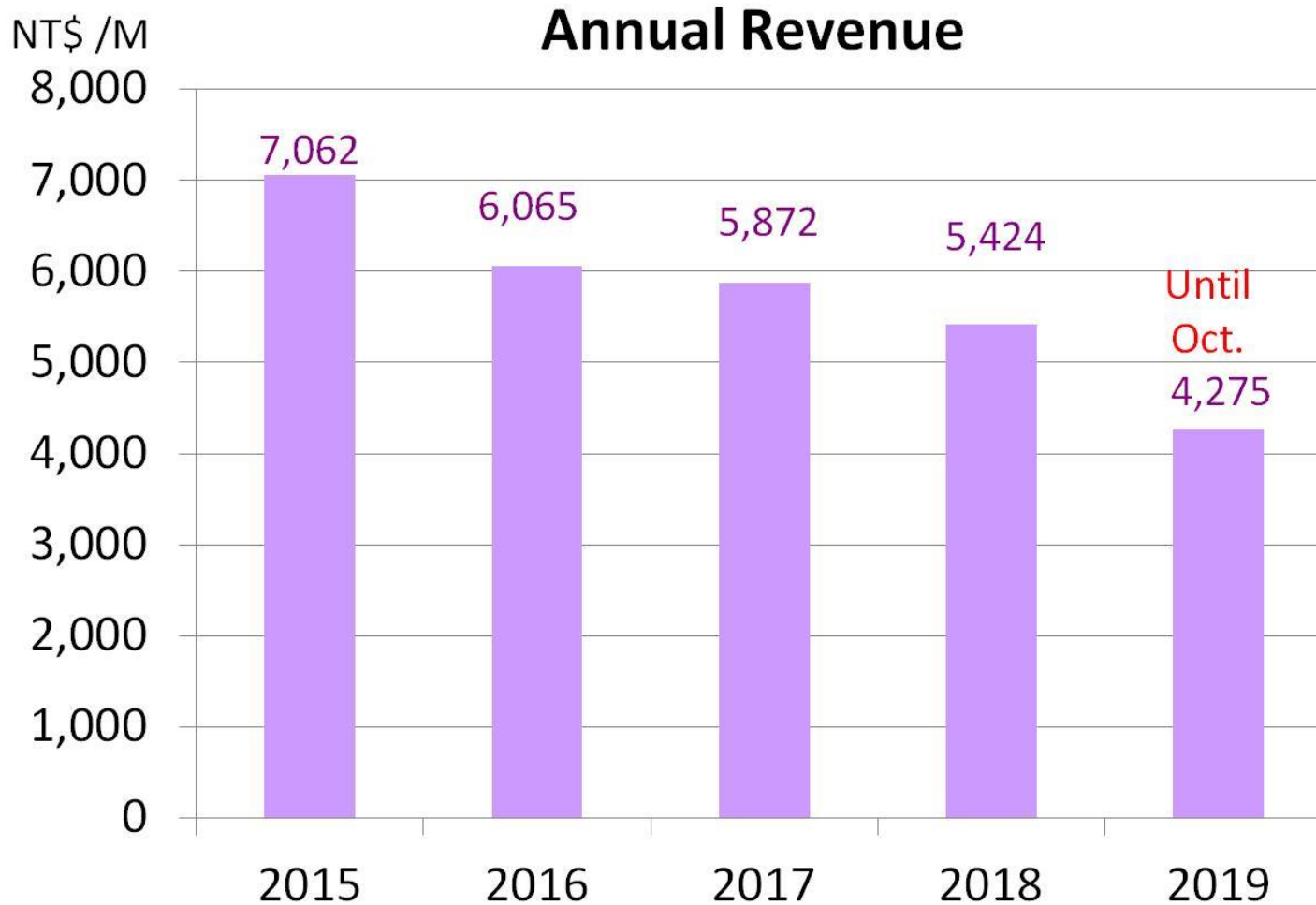




- **Incorporated Date : 2000.07.28**
- **IPO Date: 2011.07.28**
- **Company Code: 4935**
- **Capital : 1,309,370,910 NTD**
- **Main Products: Light Guides in Miscellaneous Applications**

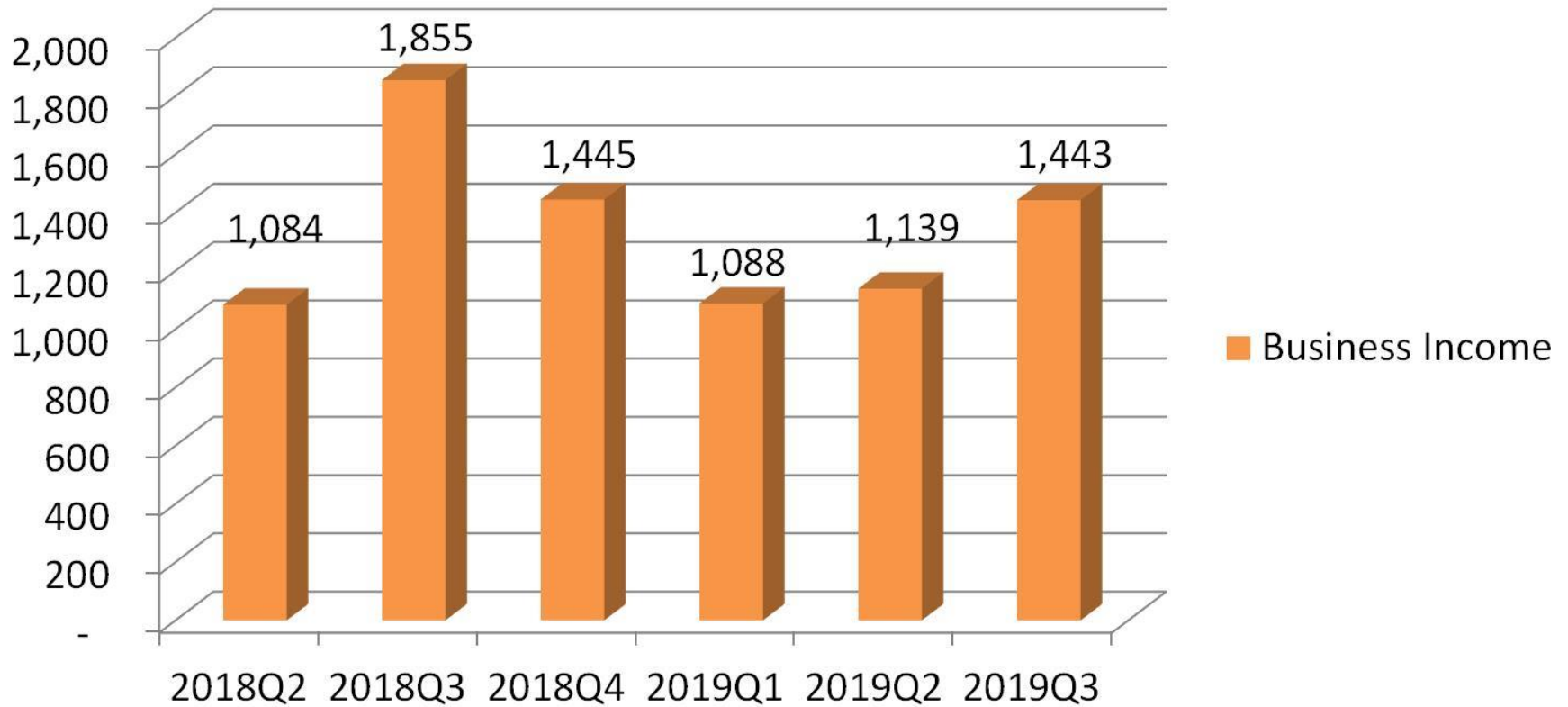




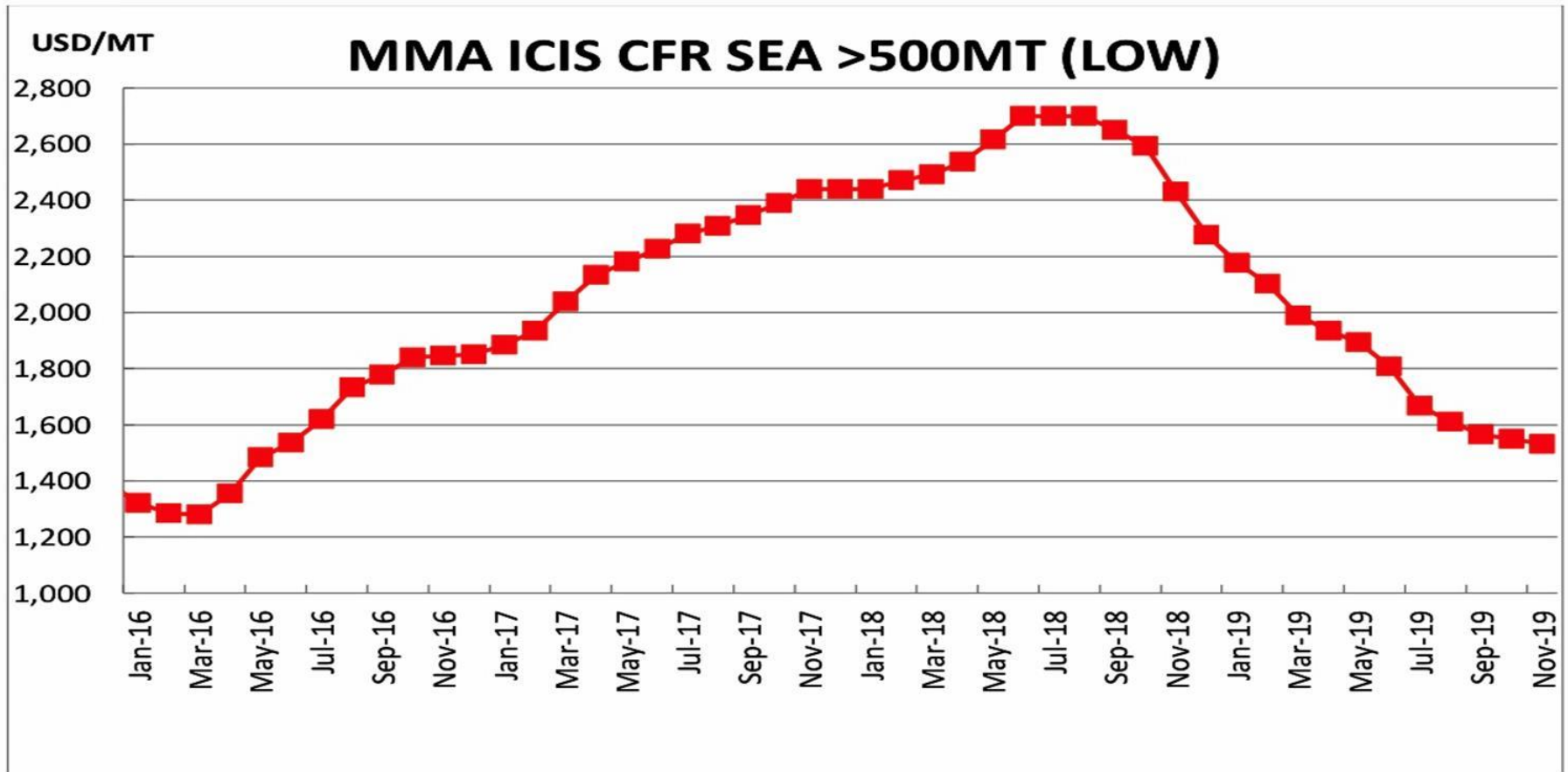


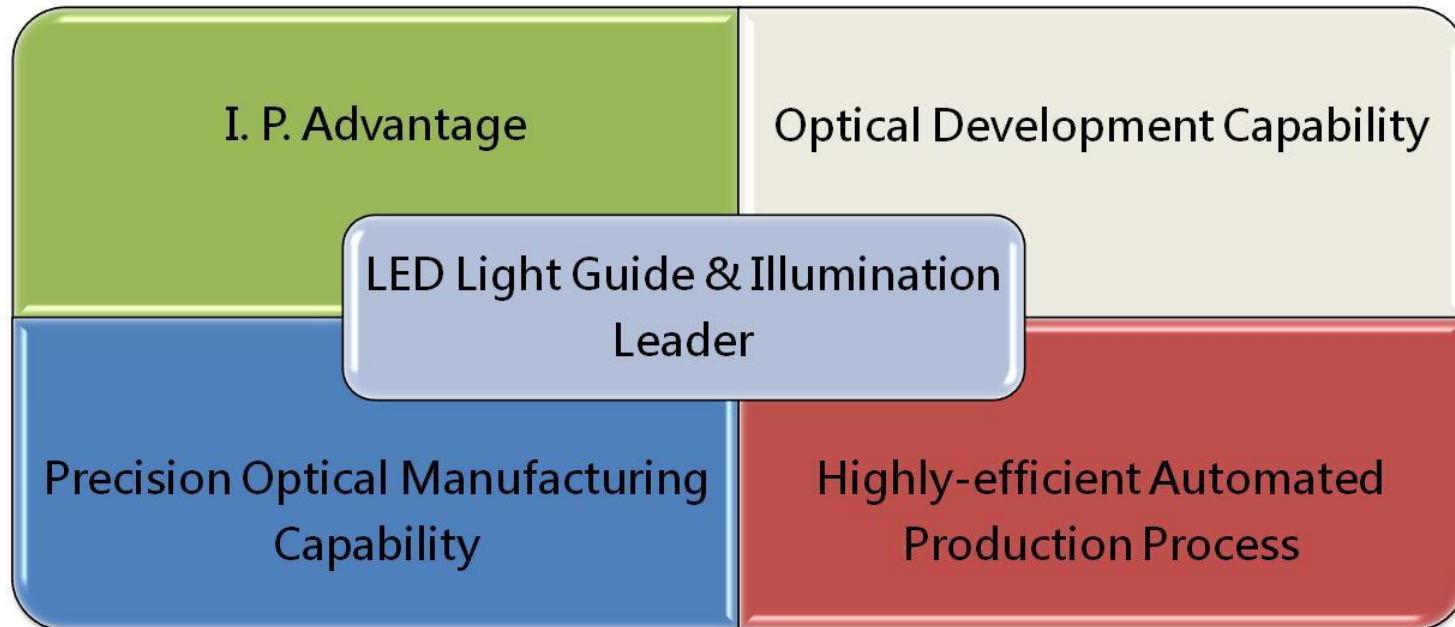


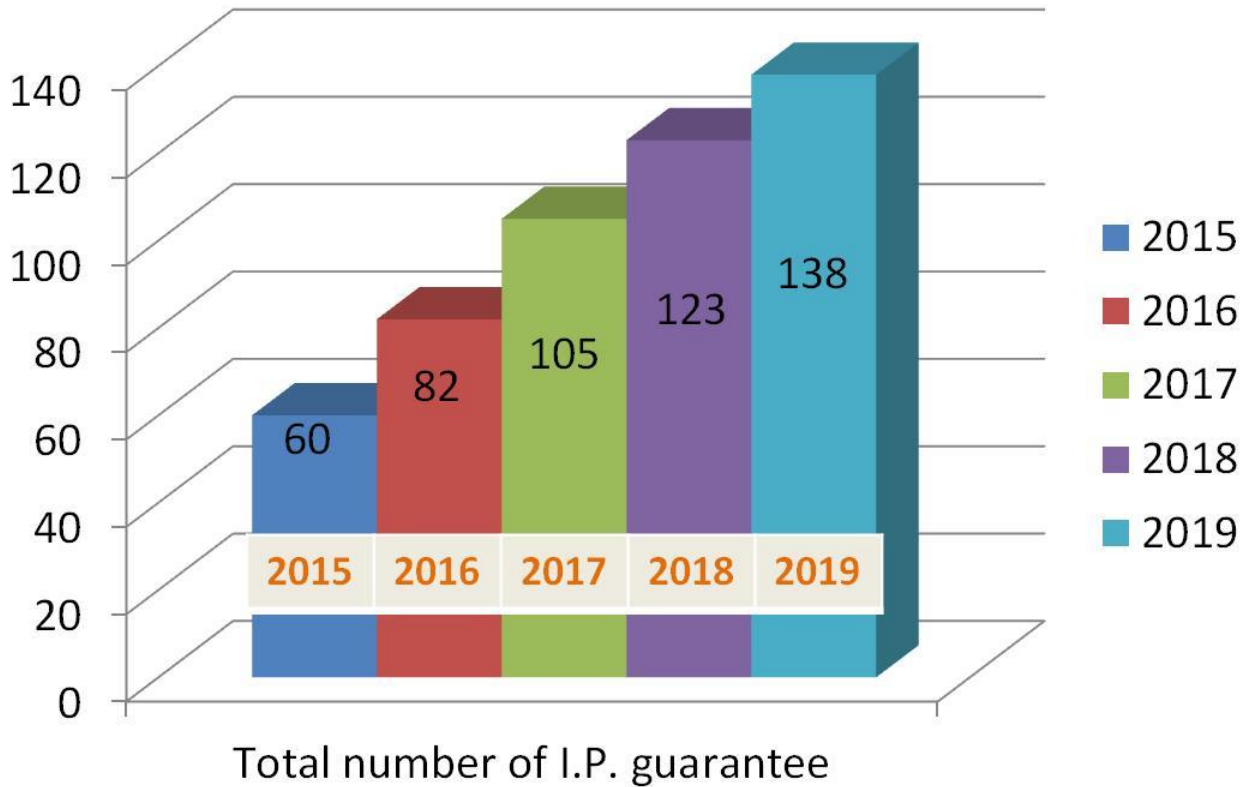
NT\$/M



Gross Margin	13.73%	14.84%	12.83%	15.67%	15.68%	20.02%
EPS	0.24	1	0.25	0.18	0.38	1.13



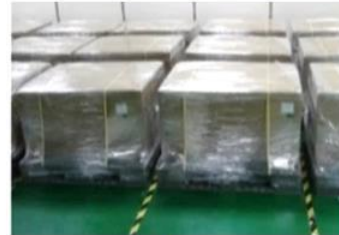






Start from Pellets

In-line Packaging.



**In line 100% inspection.
Cover Protection film
Barcode Marking**

**Edge / Surface Cleaning
Barcode Reading**



Extruder

Forming

Protection Film

Cutting

Stacking

Polishing

Cleaning

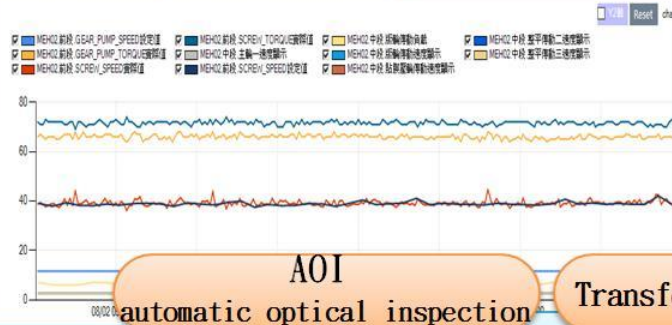
Edging

Packing





Auto-adjustment of machine parameters



AOI automatic optical inspection



Transferred by Robot Arm



Automatic Packaging



Extruder

Forming

Masking

Cutting

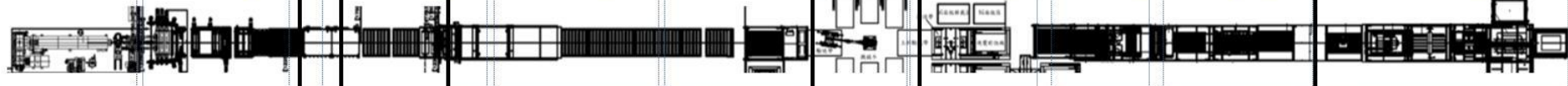
Stacking

Polishing

Cleaning

Edging

Packing





A. I. - Deep Learning

CNN Network : LeNet

Average validation accuracy : 99.33%

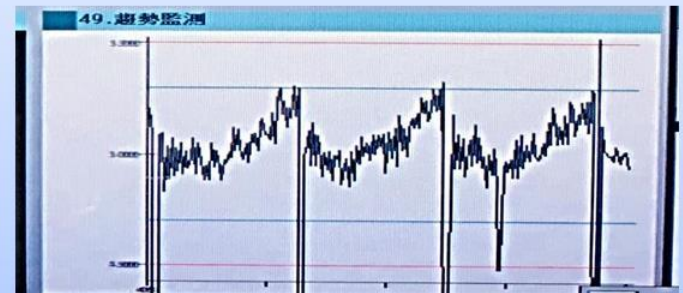
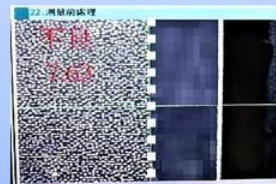
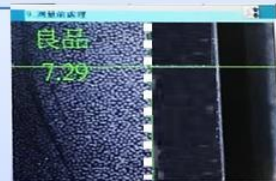
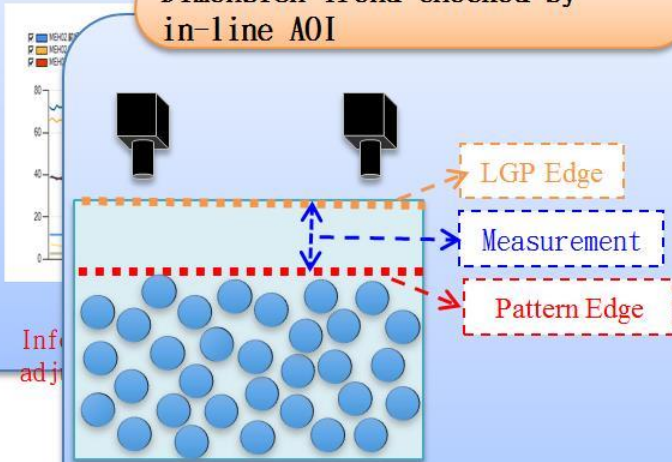
A. I. - Automatic Categorization of Defects
Big Data Model - Analyze for Go/No-Go

Fiducial Marks Identification for Processing by CCD

Dimension Trend Checked by in-line AOI

Transfer Platform

Polish Station



Extruder

Forming

Masking

Cutting

Stacking

Polishing

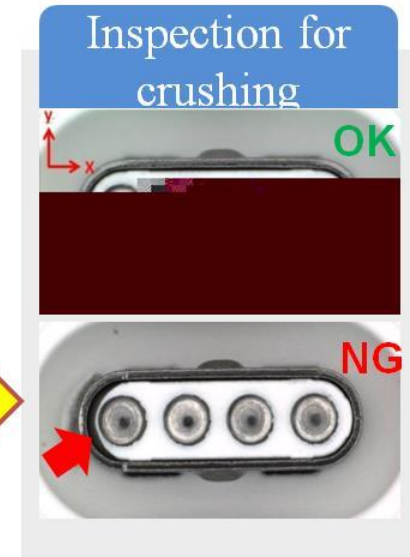
Cleaning

Edging

Packing

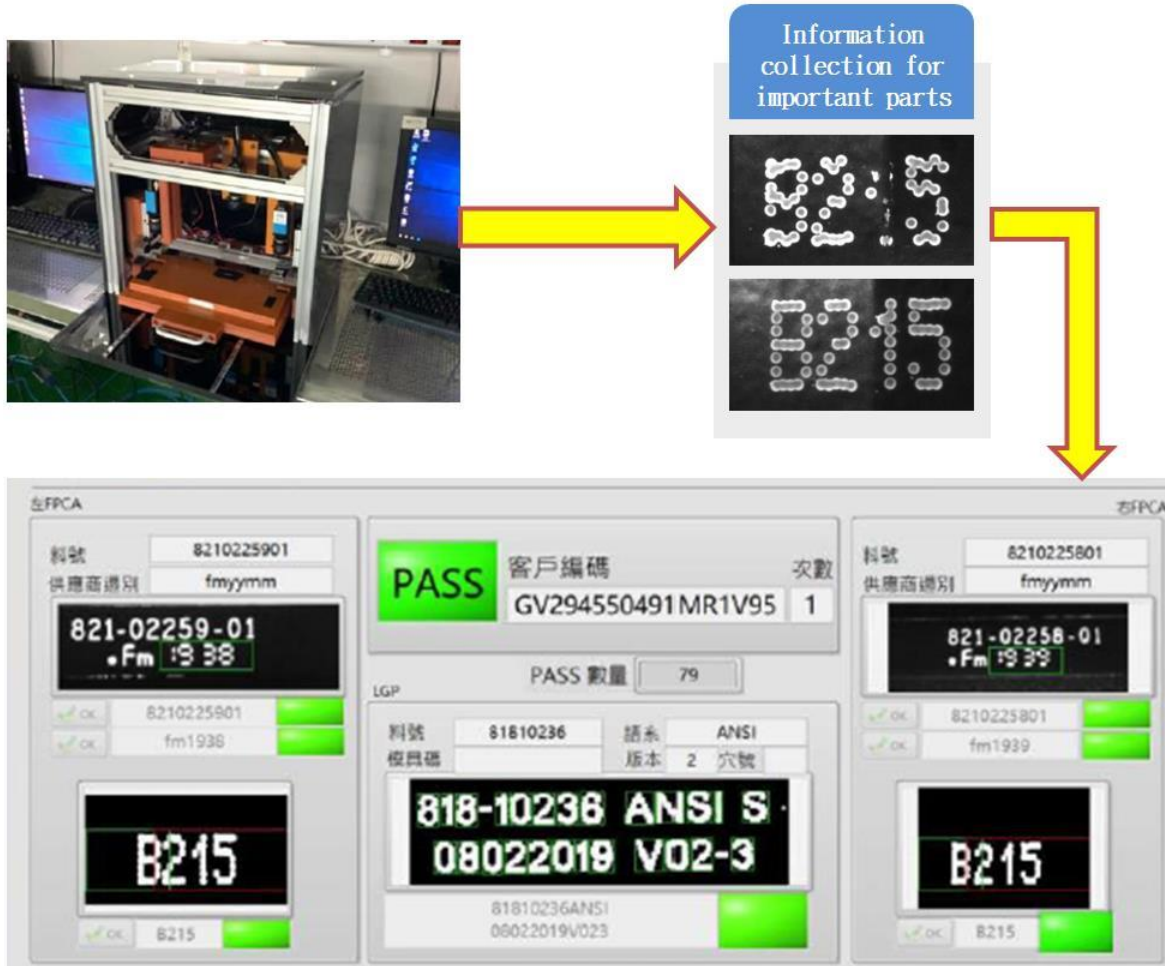


- Utilization of deep learning to strengthen inspection capability for every process
 - Screen out defects, categorize
 - Utilize AI learning system to judge for improvement





- Utilization of deep learning to strengthen management capability of material identification and traceability

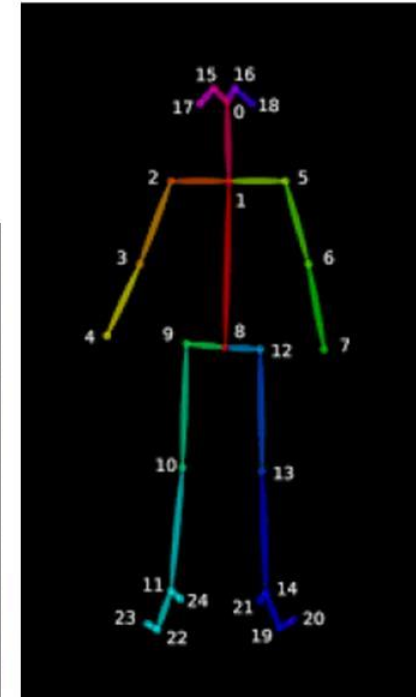
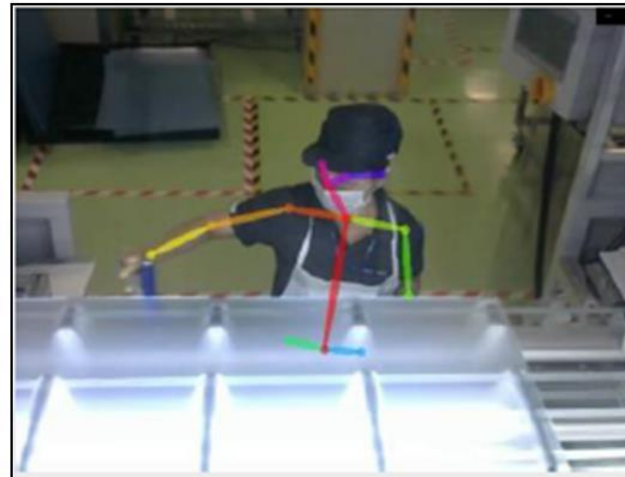


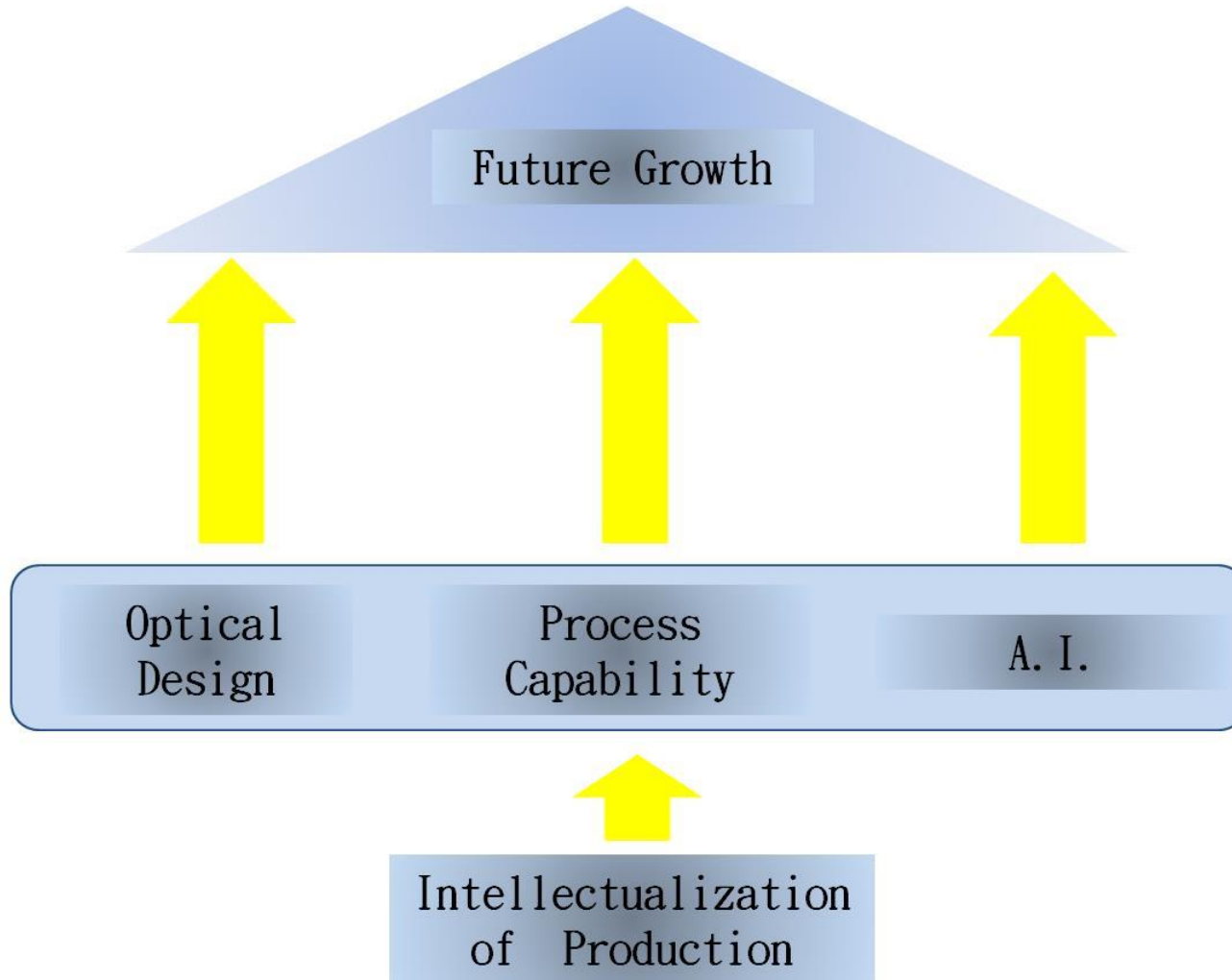


工單																			
✓ 當天工單與昨天未結工單										✗ 昨天已結工單					* 紅色-當天之尚未結單				
NO.	NO.	NO.	NO.	NO.	NO.	NO.	NO.	NO.	NO.	NO.	NO.	NO.	NO.	NO.					
工單	料號	品名	單位	完工	投入	投入	投入	投入	投入	投入	投入	投入	投入	投入					
NO.	NO.	NO.	NO.	NO.	NO.	NO.	NO.	NO.	NO.	NO.	NO.	NO.	NO.	NO.					
119090140	04512-21-001	Asy Back Case Complete, Orange, inReach Mini	件	341	341	341	0	0	0	0	0	0	0	0					
2019/09/25 08:00	2019/09/25 09:30	6	E	63.34	0	1002262	黃	完											

資料														
工單	姓名	由機台	至機台	開始作業時間	結束作業時間	休息時間	人工時	機工時	總時數	JOB_TITLE	已開辦進度	技能		
11012511	張見福			2019/09/25 08:00	2019/09/25 09:30	0	1.50			學生	Y	06-06 泡棉貼		
11012431	阮廷謙			2019/09/25 08:00	2019/09/25 09:30	0	1.50			學生	Y	06-04 白膠		
11012420	歐廷宇			2019/09/25 08:00	2019/09/25 09:30	0	1.50			學生	Y	01-18 組裝電池		
10012272	林國敏			2019/09/25 08:00	2019/09/25 09:30	0	1.50				Y	01-08 組裝-灌裝PIN-去膠		

- Electronic SOP
- Assessment of Skill;
On-duty Management
- Management of Worker's
Operation







Thanks !!!